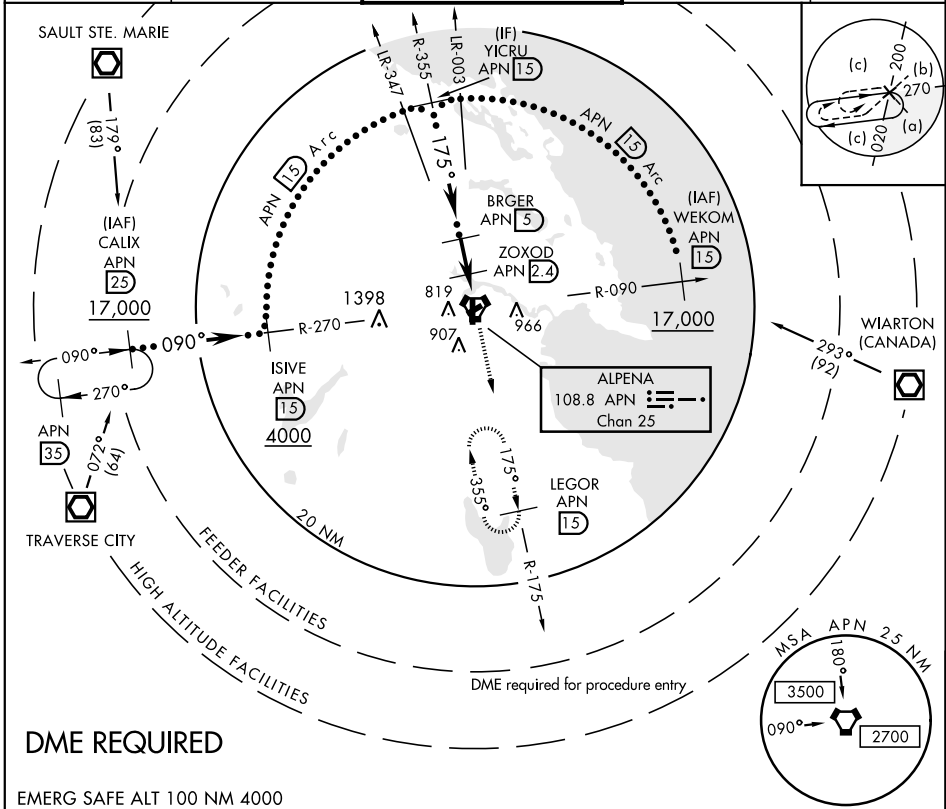


HI-TACAN RWY 19

VORTAC APN 108.8 Chan 25	APCH CRS 175°	Rwy Idg TDZE Arprt Elev 9001 683 690	JAL-718 [USAF]	ALPENA COUNTY RGNL (KAPN)
--	-------------------------	--	----------------	---------------------------

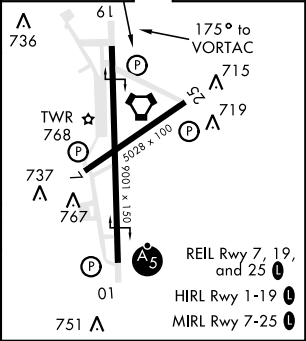
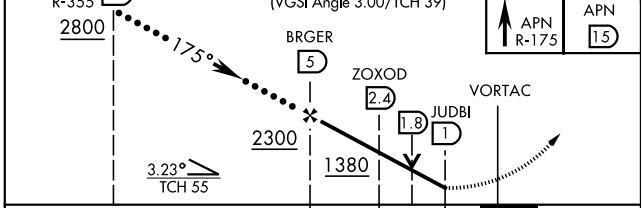
<p>▼ Visibility reduction by Helicopters NA</p>	<p>MISSED APPROACH: Climb to 5000 on APN R-175 to LEGOR (1.5 DME) and hold, continue climb in hold to 5000.</p>
---	---

ASOS 120.675	ALPENA APP CON 128.425 379.3	ALPENA TOWER ★ 121.35 (CTAF) 0 318.1	GND CON 121.9 275.8	UNICOM 122.95
------------------------	--	--	-------------------------------	-------------------------



DME REQUIRED

EMERG SAFE ALT 100 NM 4000



CATEGORY	C	D	E
S-19	1140-1 3/8 450 (500-1 1/2)	457 (500-1 3/8)	
CIRCLING	1140-2 450 (500-2)	1240-2 550 (600-2)	1320-2 1/4 630 (700-2 1/4)

EC-1, 10 OCT 2019 to 07 NOV 2019

EC-1, 10 OCT 2019 to 07 NOV 2019