

ALPENA, MICHIGAN

# HI-VOR or TACAN RWY 1

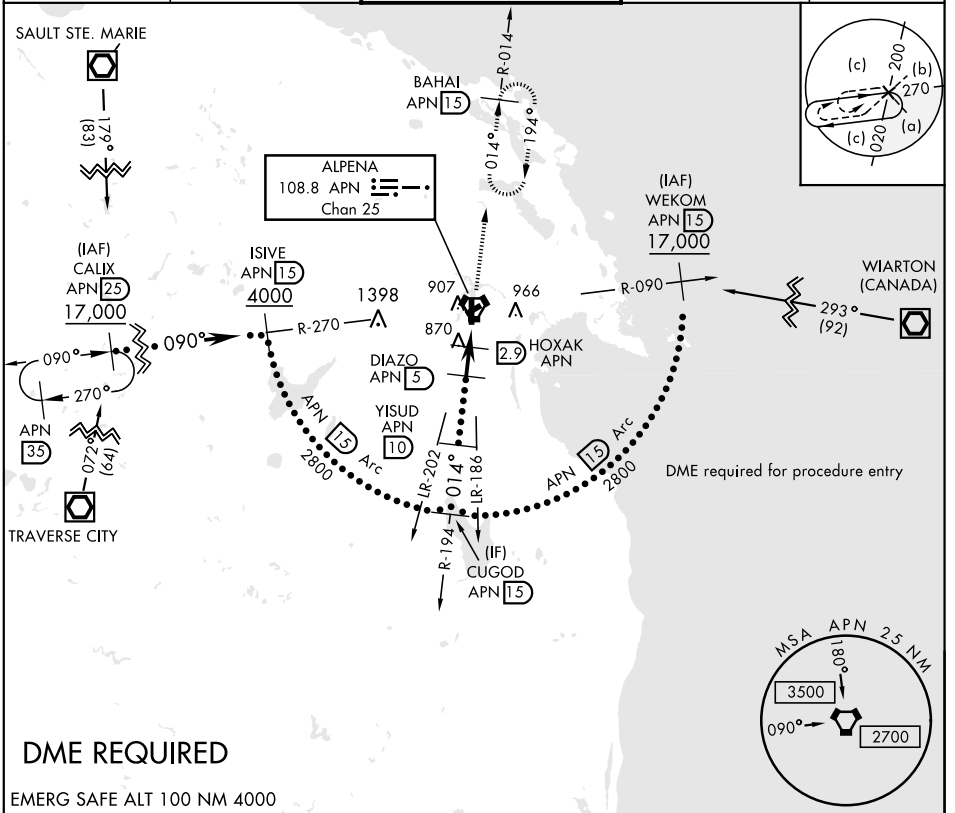
VORTAC APN <b>108.8</b> Chan <b>25</b>	APCH CRS <b>014°</b>	Rwy Idg TDZE Arprt Elev <b>9001</b> <b>685</b> <b>690</b>	JAL-718 [USAF]	ALPENA COUNTY RGNL (KAPN)
--	-------------------------	--	----------------	---------------------------

▼ \* When ALS inop, increase vis to 1 3/8.

MALS R

MISSED APPROACH: Climb to 5000 on APN R-014 to BAHAI 15 DME and hold, continue climb in hold to 5000.

ASOS <b>120.675</b>	ALPENA APP CON <b>128.425 379.3</b>	ALPENA TOWER ★ <b>121.35 (CTAF) 318.1</b>	GND CON <b>121.9 275.8</b>	UNICOM <b>122.95</b>
------------------------	--	--	-------------------------------	-------------------------



EC-1, 10 OCT 2019 to 07 NOV 2019

EC-1, 10 OCT 2019 to 07 NOV 2019

## DME REQUIRED

EMERG SAFE ALT 100 NM 4000

CUGOD R-194 2800	YISUD 2800	DIAZO 2000	HOXAK 1340	WUDIM 1340	VORTAC 5000	BAHAI APN 15 5000	ELEV 690	TDZE 685
CATEGORY	C		D		E			
S-1 *	1140-7/8		455 (500-7/8)					
CIRCLING	1140-1 1/2 450 (500-1 1/2)		1240-2 550 (600-2)		1320-2 1/4 630 (700-2 1/4)			

ALPENA, MICHIGAN  
Amdt 1B 15AUG19

45° 05' N-83° 34' W

ALPENA COUNTY RGNL (KAPN)

# HI-VOR or TACAN RWY 1