

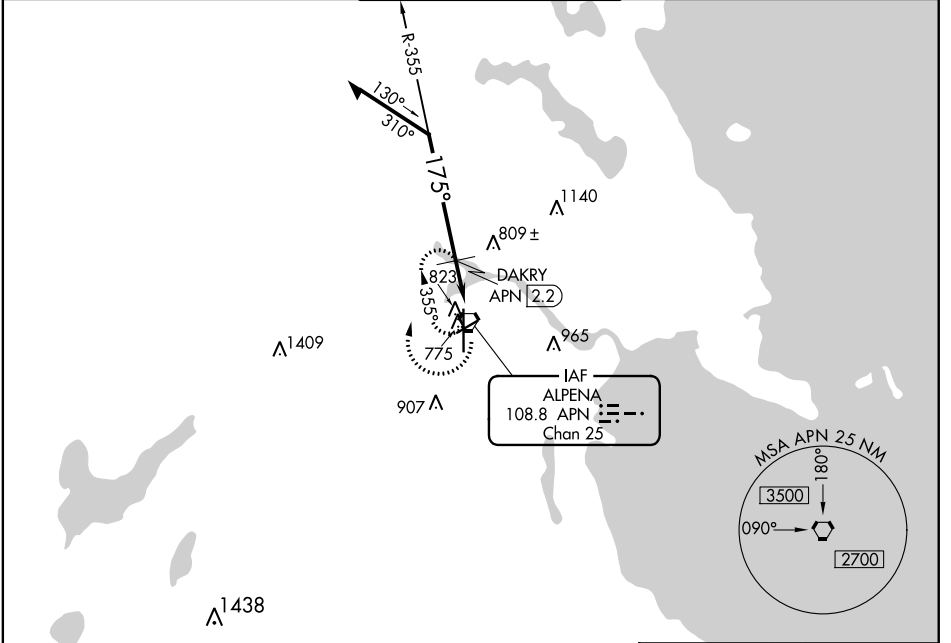
VORTAC APN 108.8 Chan 25	APP CRS 175°	Rwy Idg TDZE Apt Elev	9001 683 690
---------------------------------------	------------------------	-----------------------------	---

VOR RWY 19

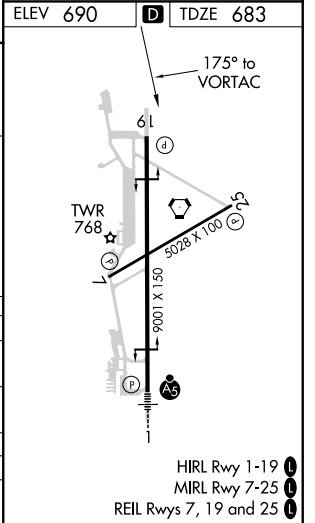
ALPENA COUNTY RGNL (APN)

-32°C	Rwy 19 helicopter visibility reduction below 3/4 SM NA.	MISSED APPROACH: Climbing right turn to 2500 in APN VORTAC holding pattern.
-------	---	---

ASOS 120.675	ALPENA APP CON ★ 128.425 379.3	ALPENA TOWER ★ 121.35 (CTAF) 318.1	GND CON 121.9 275.8	UNICOM 122.95
------------------------	--	--	-------------------------------	-------------------------



Remain within 10 NM				
VGSi and descent angles not coincident (VGSi Angle 3.00/TCH 39).				
CATEGORY	A	B	C	D
S-19	1340-1	657 (700-1)	1340-1 7/8	657 (700-1 7/8)
CIRCLING	1340-1	650 (700-1)	1340-1 7/8 650 (700-1 7/8)	1340-2 650 (700-2)
DAKRY FIX MINIMUMS				
S-19	1100-1	417 (500-1)	1100-1 1/8	417 (500-1 1/8)
CIRCLING	1140-1	450 (500-1)	1220-1 1/2 530 (600-1 1/2)	1280-2 590 (600-2)



EC-1, 10 OCT 2019 to 07 NOV 2019

EC-1, 10 OCT 2019 to 07 NOV 2019