

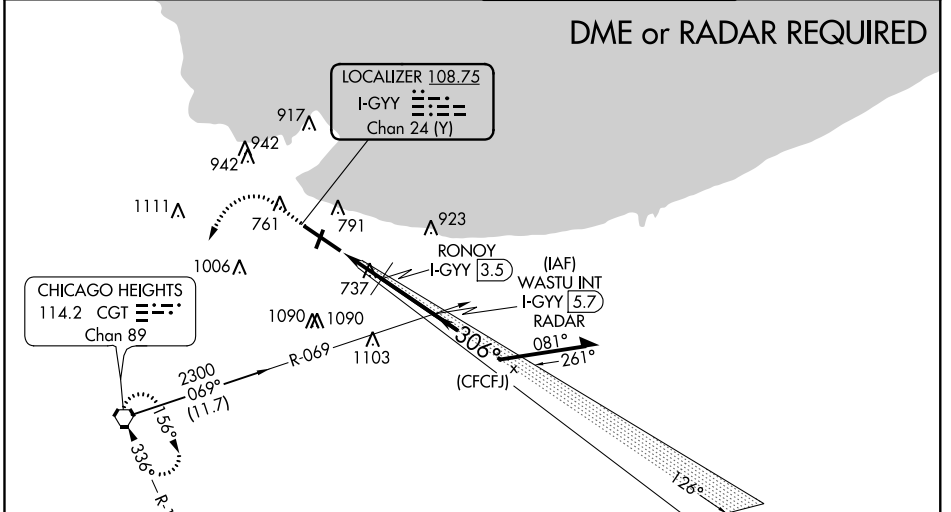
LOC I-GYY <b>108.75</b> Chan 24 (Y)	APP CRS <b>306°</b>	Rwy Idg TDZE Apt Elev	<b>7959</b> <b>591</b> <b>597</b>
---	------------------------	-----------------------------	---

# COPTER ILS or LOC RWY 30

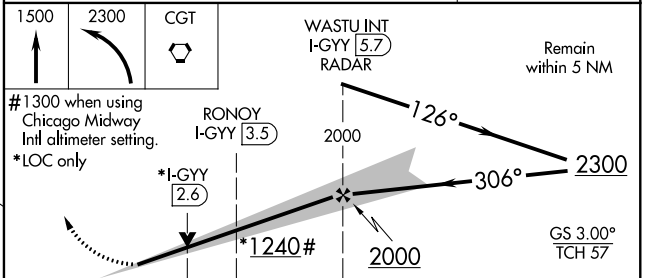
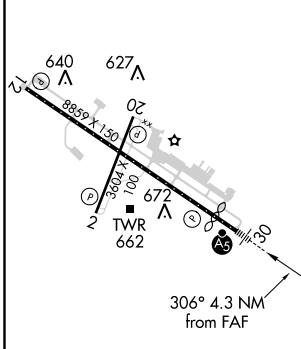
GARY/CHICAGO INTL (GYY)

<b>⚠</b> When local altimeter setting not received, use Chicago Midway Intl altimeter setting and increase all DA 46 feet and all MDA 60 feet. VDP NA with Chicago Midway Intl altimeter setting.	MALSR 	MISSED APPROACH: Climb to 1500 then climbing left turn to 2300 direct CGT VORTAC and hold.
---	-----------	--

ATIS <b>134.575</b>	CHICAGO APP CON <b>133.1 285.6</b>	GARY TOWER * <b>125.6 (CTAF) 0</b>	GND CON <b>121.9</b>
------------------------	---------------------------------------	---------------------------------------	-------------------------



ELEV 597	<b>D</b>	TDZE 591
----------	----------	----------



CATEGORY		COPTER	
S-ILS 30		791-¼	200 (200-¼)
S-LOC 30		1240-¼	649 (700-¼)
RONOY FIX MINIMUMS			
S-LOC 30		1000-¼	409 (500-¼)

EC-2, 10 OCT 2019 to 07 NOV 2019

EC-2, 10 OCT 2019 to 07 NOV 2019