


| | | |
|--|------------------------|---|
| LOC/DME I-GYY 108.75 Chan 24 (Y) | APP CRS 306° | Rwy Idg 7959 TDZE 591 Apt Elev 597 |
|--|------------------------|---|

ILS or LOC RWY 30

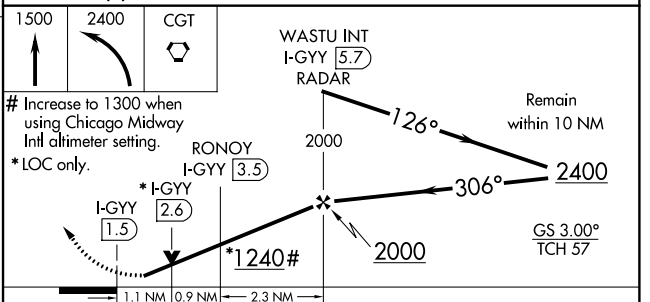
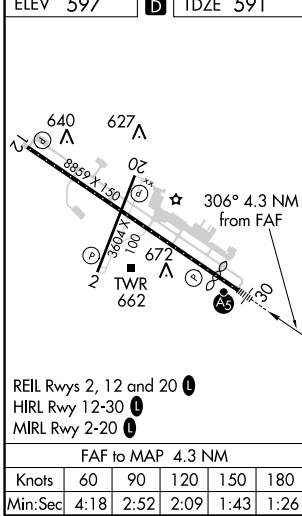
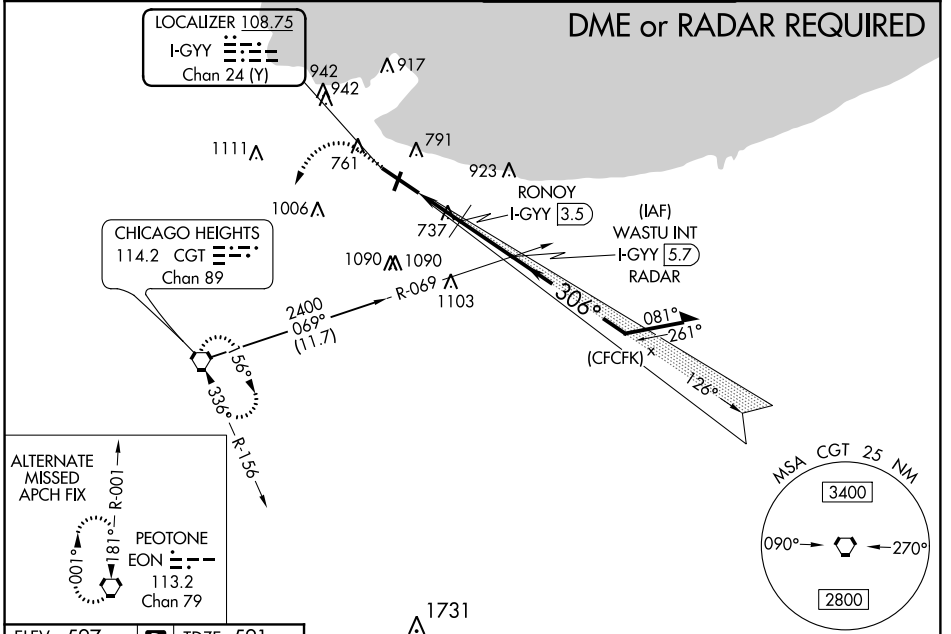
GARY/CHICAGO INTL (GYY)

⚠ When local altimeter setting not received, use Chicago Midway Intl altimeter setting and increase all DA 46 feet and all MDA 60 feet, increase S-LOC 30 Cat C/D visibility to 1½ miles, increase Circling Cat C/D and RONOY fix minimums Circling Cat C/D visibility ¼ mile. VDP NA with Chicago Midway Intl altimeter setting. **RVR 1800 authorized with use of FD or AP or HUD to DA, NA when using Chicago Midway Intl.

MALSR 

MISSED APPROACH: Climb to 1500 then climbing left turn to 2400 direct CGT VORTAC and hold.

| | | | |
|------------------------|---------------------------------------|---------------------------------------|-------------------------|
| ATIS 134.575 | CHICAGO APP CON 133.1 285.6 | GARY TOWER * 125.6 (CTAF) 0 | GND CON 121.9 |
|------------------------|---------------------------------------|---------------------------------------|-------------------------|



| CATEGORY | A | B | C | D |
|---------------------------|--------------------|-------------|--------------|--------------|
| S-ILS 30** | 791/24 200 (200-½) | | | |
| S-LOC 30 | 1240/24 | 649 (700-½) | 1240-1¾ | 649 (700-1¾) |
| C CIRCLING | 1240-1 | 643 (700-1) | 1400-2¼ | 1420-2¾ |
| | | | 803 (900-2¼) | 823 (900-2¾) |
| RONOY FIX MINIMUMS | | | | |
| S-LOC 30 | 1000/24 | 409 (500-½) | 1000/40 | 409 (500-¾) |
| C CIRCLING | 1140-1 | 1180-1 | 1400-2¼ | 1420-2¾ |
| | 543 (600-1) | 583 (600-1) | 803 (900-2¼) | 823 (900-2¾) |

EC-2, 10 OCT 2019 to 07 NOV 2019

EC-2, 10 OCT 2019 to 07 NOV 2019