

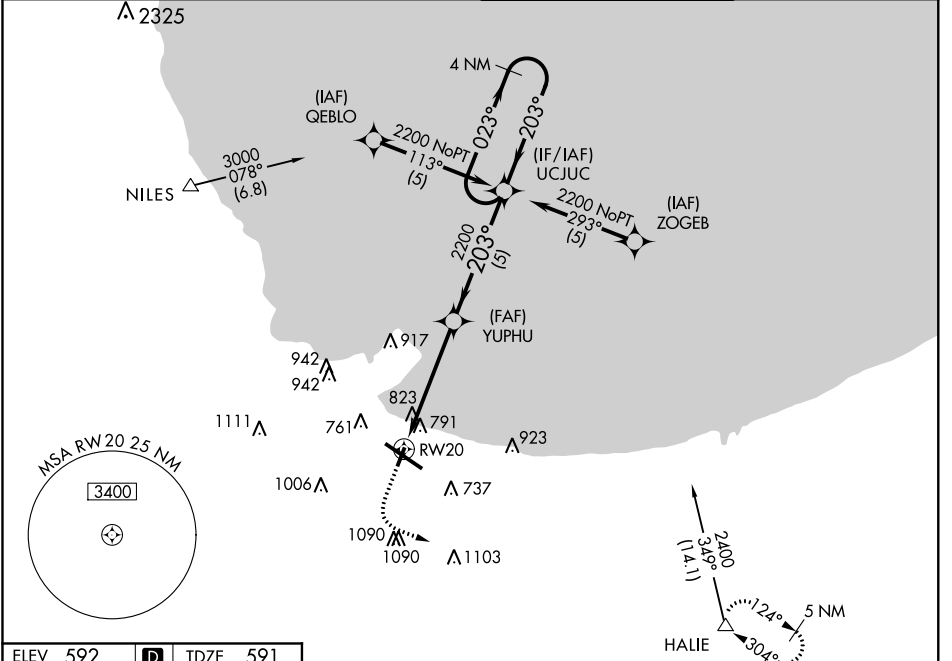
APP CRS 203°	Rwy Idg 3604
	TDZE 591
	Apt Elev 592

RNAV (GPS) RWY 20

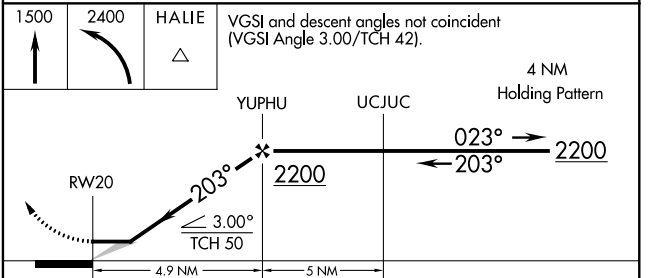
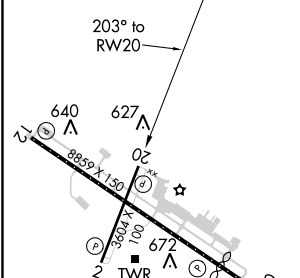
GARY/CHICAGO INTL (GYY)

NA	GPS or RNP-0.3 required. DME/DME RNP-0.3 NA.	MISSED APPROACH: Climb to 1500 then climbing left turn to 2400 direct HALIE WP and hold.	
----	---	--	--

ATIS 134.575	CHICAGO APP CON 133.1 285.6	GARY TOWER ★ 125.6 (CTAF) 0	GND CON 121.9
------------------------	---------------------------------------	---------------------------------------	-------------------------



ELEV 592	D	TDZE 591
----------	----------	----------



VGSI and descent angles not coincident (VGSI Angle 3.00/TCH 42).				
CATEGORY	A	B	C	D
GLS PA DA	NA			
LNAV/VNAV DA	NA			
LNAV MDA	1080-1 489 (500-1)	1080-1¼ 489 (500-1¼)	1080-1½ 489 (500-1½)	1080-1½ 489 (500-1½)
CIRCLING	1140-1 548 (600-1)	1180-1½ 588 (600-1½)	1180-2 588 (600-2)	1180-2 588 (600-2)

REIL Rwy 2, 12 and 20
HIRL Rwy 12-30
MIRL Rwy 2-20

GARY, INDIANA
Orig 25JAN01

41°37'N - 87°25'W

RNAV (GPS) RWY 20

EC-2, 10 OCT 2019 to 07 NOV 2019

EC-2, 10 OCT 2019 to 07 NOV 2019