

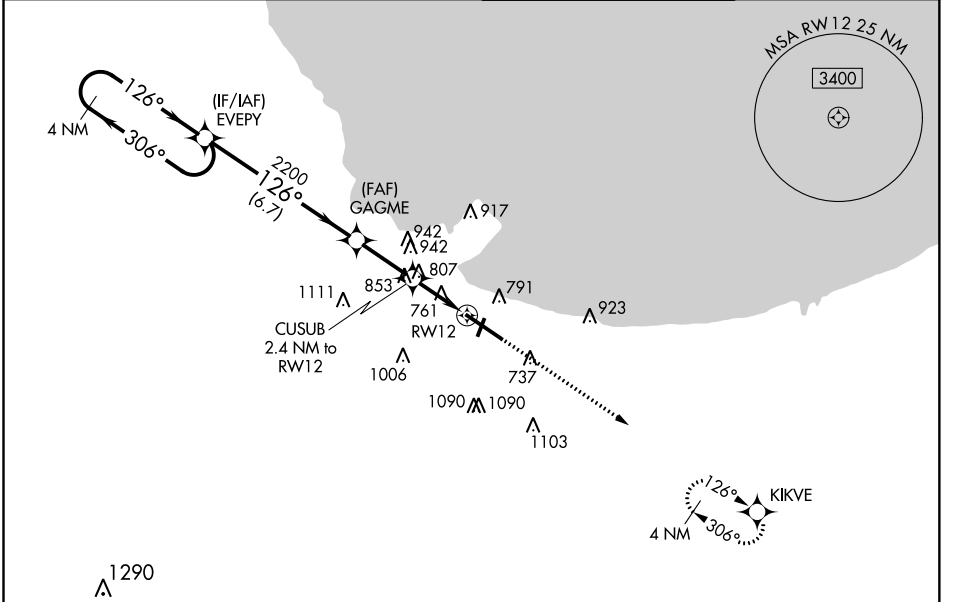
WAAS CH 70623 W12A	APP CRS 126°	Rwy Idg TDZE Apt Elev	7959 597 597
--	------------------------	-----------------------------	---

RNAV (GPS) Y RWY 12

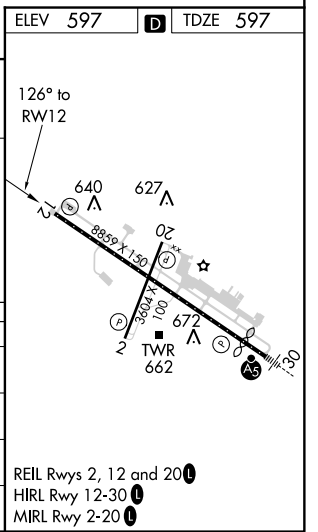
GARY/CHICAGO INTL (GYY)

<p>▼ ▲</p>	<p>For uncompensated Baro-VNAV systems, LNAV/VNAV NA below -16°C (4°F) or above 54°C (130°F). DME/DME RNP-0.3 NA. Rwy 12 helicopter visibility reduction below 3/4 SM NA.</p>	<p>MISSED APPROACH: Climb to 2400 direct KIKVE and hold.</p>
----------------	---	--

<p>ATIS 134.575</p>	<p>CHICAGO APP CON 133.1 285.6</p>	<p>GARY TOWER * 125.6 (CTAF) 0</p>	<p>GND CON 121.9</p>
--------------------------------	---	---	---------------------------------



	<p>4 NM Holding Pattern</p> <p>EVEPY</p> <p>2200 ← 306° 126° →</p> <p>GP 3.00° TCH 50</p>	<p>GAGME</p> <p>2200</p> <p>2200</p>	<p>CUSUB</p> <p>2.4 NM to RWY 12</p> <p>*1.3 NM to RWY 12</p> <p>*1400</p>	<p>2400</p> <p>KIKVE</p> <p>*LNAV only</p>
CATEGORY	A	B	C	D
LPV DA		797-3/4	200 (200-3/4)	
LNAV/VNAV DA		1049-13/8	452 (500-13/8)	
LNAV MDA	1060-1	463 (500-1)	1060-13/8	463 (500-13/8)
CIRCLING	1140-1 543 (600-1)	1180-1 583 (600-1)	1400-21/4 803 (900-21/4)	1420-23/4 823 (900-23/4)



EC-2, 10 OCT 2019 to 07 NOV 2019

EC-2, 10 OCT 2019 to 07 NOV 2019