

WAAS CH 61105 W03A	APP CRS 030°	Rwy Idg 6801 TDZE 640 Apt Elev 640
--	------------------------	---

RNAV (GPS) RWY 3

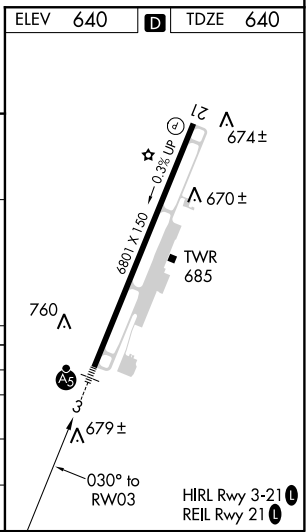
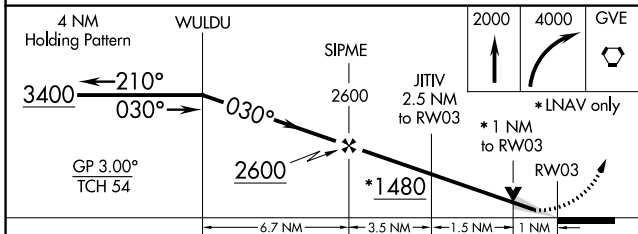
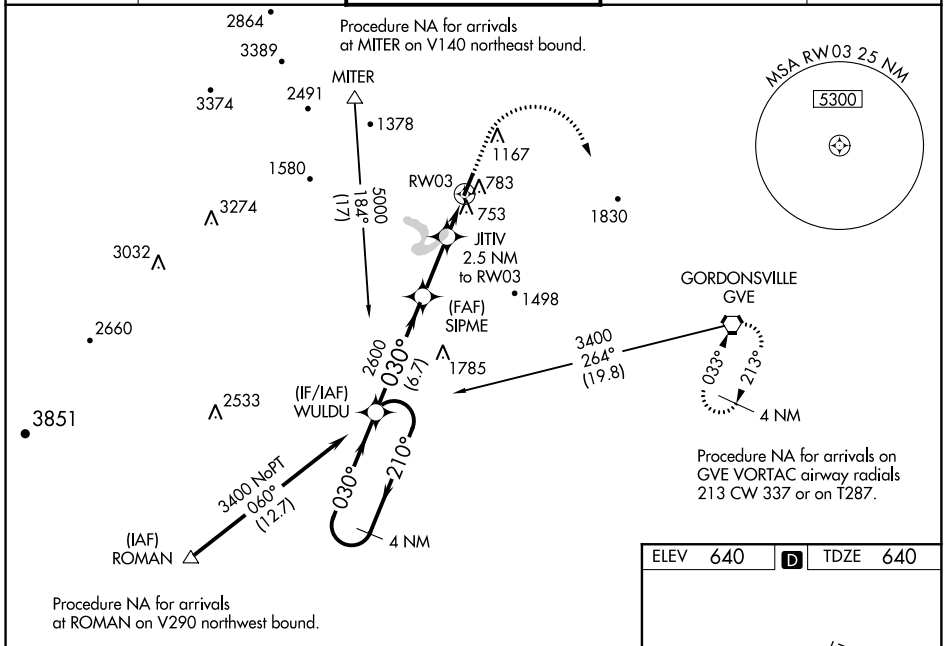
CHARLOTTESVILLE-ALBEMARLE (CHO)

⚠ For uncompensated Baro-VNAV systems, LNAV/VNAV NA below -12°C (11°F) or above 54°C (130°F). DME/DME RNP-0.3 NA. When local altimeter setting not received, use Orange altimeter setting and increase LPV DA to 912, LNAV/VNAV DA to 986, and all MDA 80 feet; increase LNAV/VNAV all Cats visibility 1/8 mile, Circling Cats C/D visibility 1/4 mile, and LNAV Cats C/D visibility 3/8 mile. Baro-VNAV and VDP NA when using Orange altimeter setting. For inoperative MALS, increase LNAV/VNAV Cats C/D to 3/8 mile and LNAV Cats C/D visibility to 1 mile. For inoperative MALS when using Orange altimeter setting, increase LPV all Cats visibility to 3/8 mile, and LNAV Cats C/D visibility to 1 3/8 mile.

MALS

MISSED APPROACH:
Climb to 2000 then climbing right turn to 4000 direct GVE VORTAC and hold.

ATIS 118.425	POTOMAC APP CON 132.85 323.125	CHARLOTTESVILLE TOWER * 124.5 (CTAF) 338.275	GND CON 121.9 338.275	UNICOM 122.95
------------------------	--	---	---------------------------------	-------------------------



CATEGORY	A	B	C	D
LPV DA		840-1/2	200 (200-1/2)	
LNAV/VNAV DA		914-1/2	274 (300-1/2)	
LNAV MDA	1020-1/2	380 (400-1/2)	1020-5/8	380 (400-5/8)
C CIRCLING	1060-1 420 (500-1)	1100-1 460 (500-1)	1500-2 1/2 860 (900-2 1/2)	1500-2 3/4 860 (900-2 3/4)

NE-3, 10 OCT 2019 to 07 NOV 2019

NE-3, 10 OCT 2019 to 07 NOV 2019