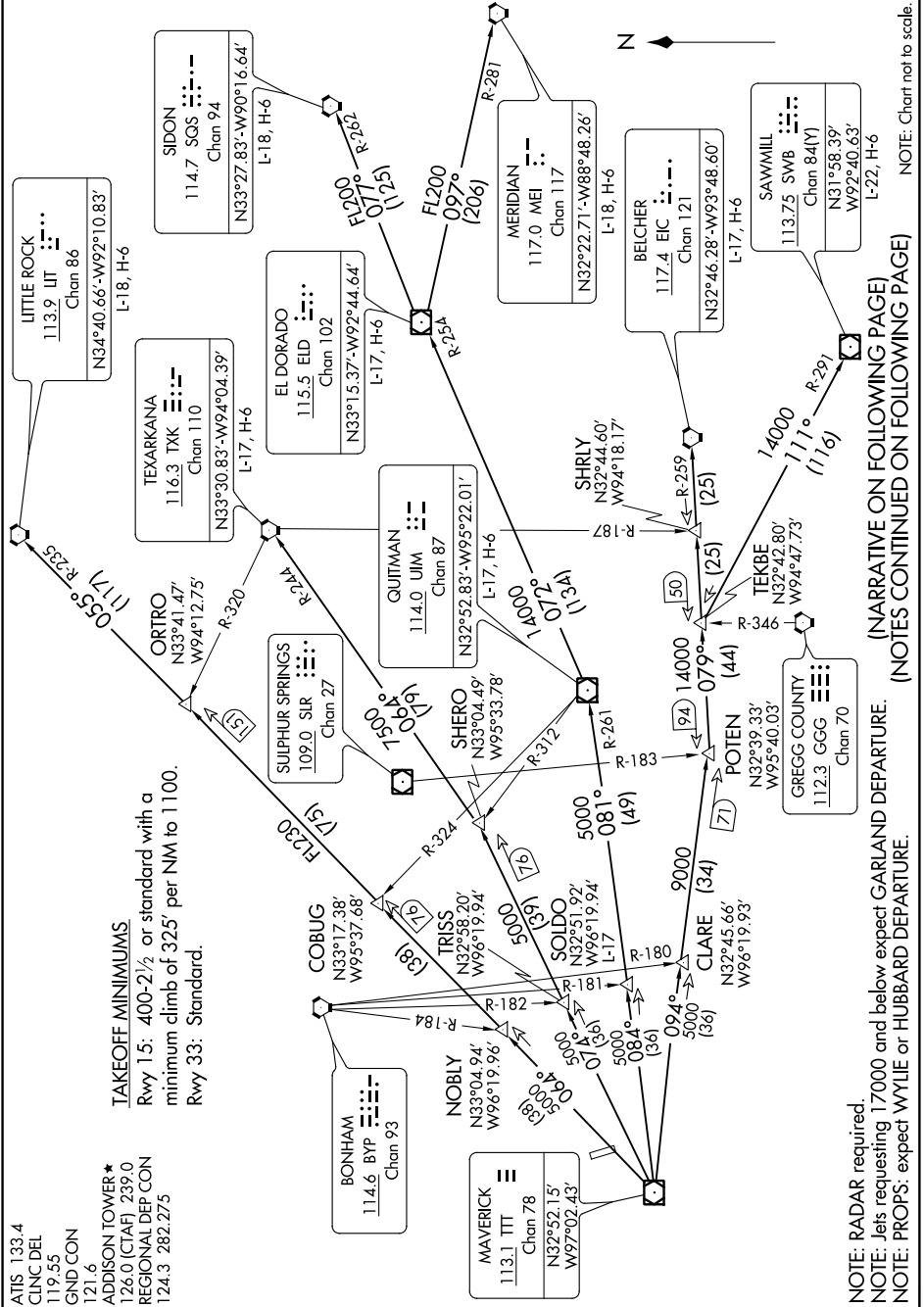


DALLAS FOUR DEPARTURE

DALLAS, TEXAS

SC-2, 10 OCT 2019 to 07 NOV 2019



TAKEOFF MINIMUMS
 Rwy 15: 400-2½ or standard with a minimum climb of 325', per NM to 1100.
 Rwy 33: Standard.

ADDITION TOWER*
 126.0 (CTAF) 239.0
 REGIONAL DEP CON
 124.3 282.275

ATIS 133.4
 CLNC DEL 119.55
 GND CON 121.6

NOTE: RADAR required.
 NOTE: Jets requesting 17000 and below expect GARLAND DEPARTURE.
 NOTE: PROPS: expect WYLIE or HUBBARD DEPARTURE.

(NARRATIVE ON FOLLOWING PAGE)
 (NOTES CONTINUED ON FOLLOWING PAGE)

NOTE: Chart not to scale.

SC-2, 10 OCT 2019 to 07 NOV 2019

DALLAS FOUR DEPARTURE

DALLAS, TEXAS