


| | | |
|---|------------------------|---|
| LOC/DME I-ADS 110.1 Chan 38 | APP CRS 155° | Rwy Idg 6224 TDZE 643 Apt Elev 644 |
|---|------------------------|---|

ILS or LOC RWY 15

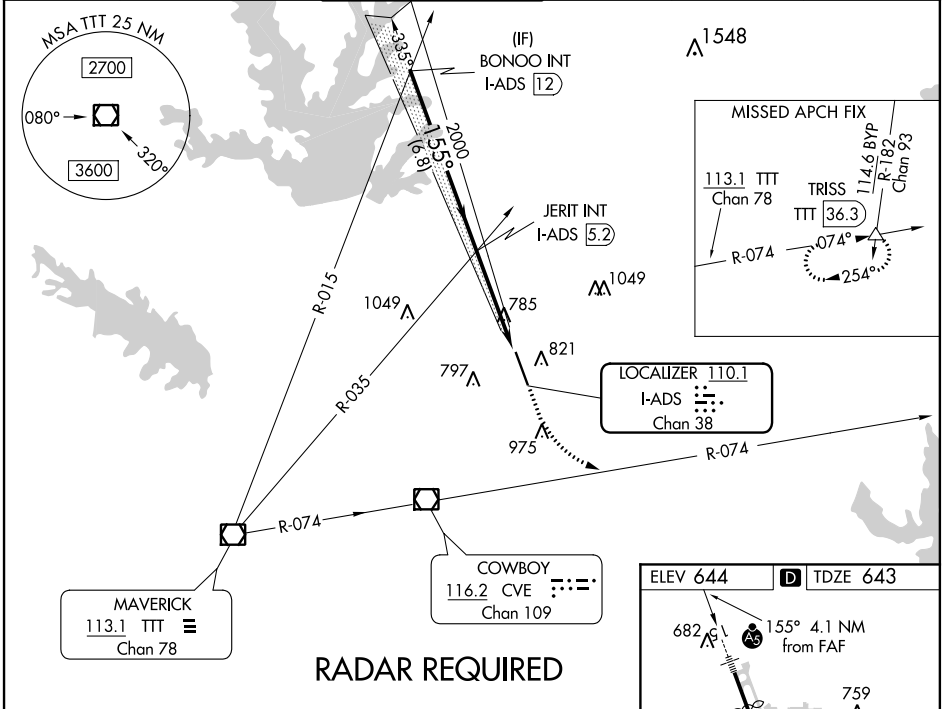
ADDISON (ADS)

⚠ When local altimeter setting not received, use Dallas-Love Field altimeter setting and increase all DA 39 feet and MDA 40 feet, increase Circling Cat C/D visibility 1/4 mile. Inoperative table does not apply to S-ILS 15 all Cats, S-LOC 15 Cats A, B & C. For inoperative MALSR, increase S-LOC 15 Cat D visibility to 1/4. Helicopter visibility reduction below 1 SM NA. For inop MALSR when using Dallas-Love Field altimeter setting increase S-LOC Cat C visibility to 1/4 and Cat D visibility to 1/2.

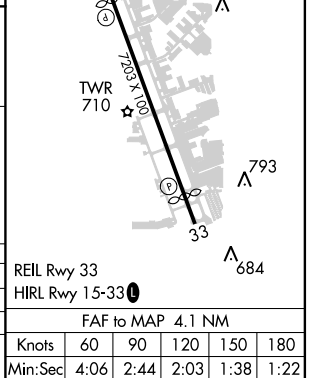
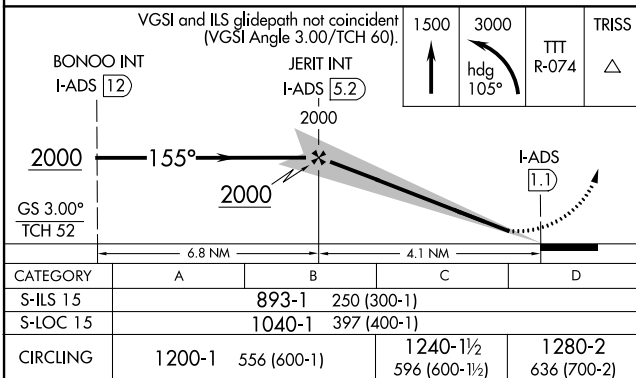
MALSR


MISSED APPROACH: Climb to 1500 then climbing left turn to 3000 via heading 105° and TTT VOR/DME R-074 to TRISS Int/TTT 36.3 DME and hold.

| | | | | | |
|----------------------|--|---|-------------------------|---------------------------|-------------------------|
| ATIS 133.4 | REGIONAL APP CON 124.3 282.275 | ADDISON TOWER* 126.0 (CTAF) 239.0 | GND CON 121.6 | CLNC DEL 119.55 | UNICOM 122.95 |
|----------------------|--|---|-------------------------|---------------------------|-------------------------|



RADAR REQUIRED



SC-2, 10 OCT 2019 to 07 NOV 2019

SC-2, 10 OCT 2019 to 07 NOV 2019