

LOC/DME I-TBQ <b>110.1</b> Chan <b>38</b>	APP CRS <b>335°</b>	Rwy Idg <b>6431</b> TDZE <b>644</b> Apt Elev <b>644</b>
---	------------------------	---

# ILS or LOC RWY 33

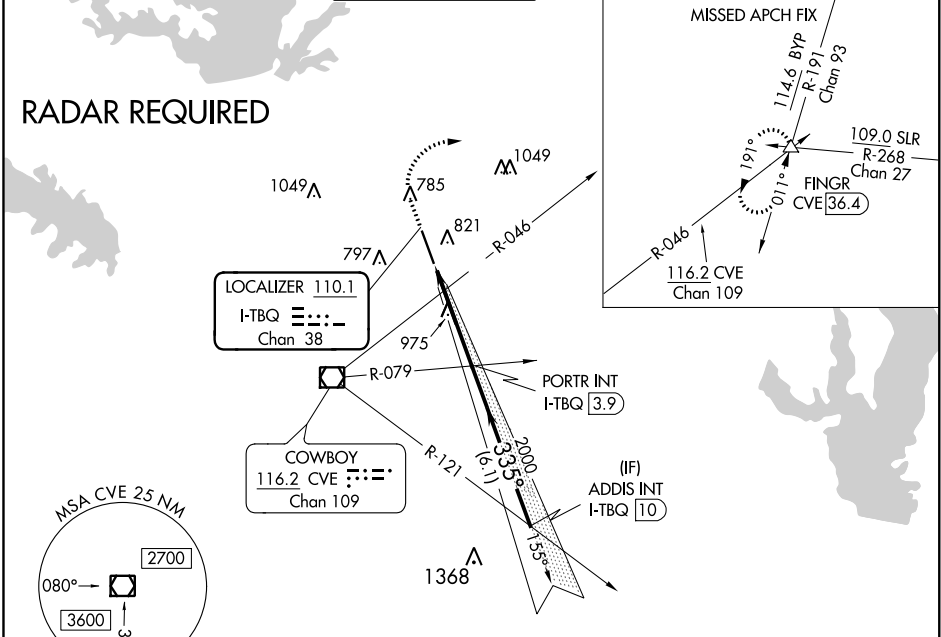
ADDISON (ADS)

**⚠** Helicopter visibility reduction below 1 SM NA. When local altimeter setting not received, use Dallas-Love Field altimeter setting and increase all DA 39 feet and all MDA 40 feet, increase S-LOC 33 and Circling Cat C/D visibility ¼ mile.

**MISSED APPROACH:** Climb to 1500 then climbing right turn to 5000 via heading 065° and CVE VOR/DME R-046 to FINGR INT/CVE 36.4 DME and hold.

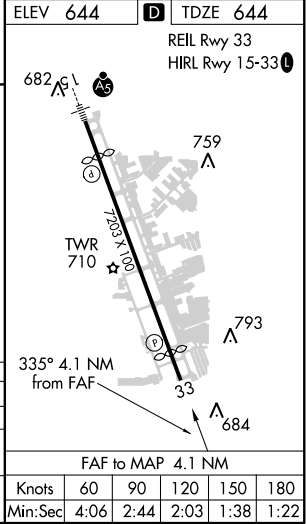
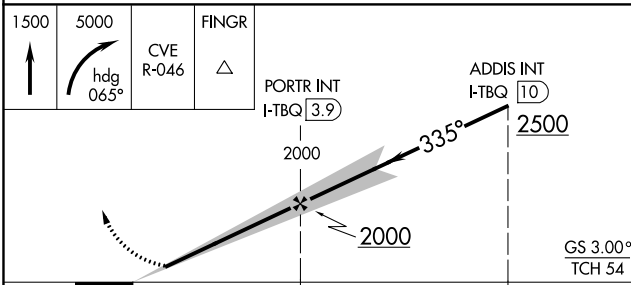
ATIS <b>133.4</b>	REGIONAL APP CON <b>124.3 282.275</b>	ADDISON TOWER * <b>126.0 (CTAF) 239.0</b>	GND CON <b>121.6</b>	CLNC DEL <b>119.55</b>	UNICOM <b>122.95</b>
----------------------	--	--	-------------------------	---------------------------	-------------------------

## RADAR REQUIRED



SC-2, 10 OCT 2019 to 07 NOV 2019

SC-2, 10 OCT 2019 to 07 NOV 2019



CATEGORY	A	B	C	D
S-ILS 33	894-1 250 (300-1)			
S-LOC 33	1240-1 596 (600-1)	1240-1½ 596 (600-1½)	1240-1¾ 596 (600-1¾)	1240-2 596 (600-2)
CIRCLING	1240-1 596 (600-1)	1240-1½ 596 (600-1½)	1280-2 636 (700-2)	

Knots	60	90	120	150	180
Min:Sec	4:06	2:44	2:03	1:38	1:22