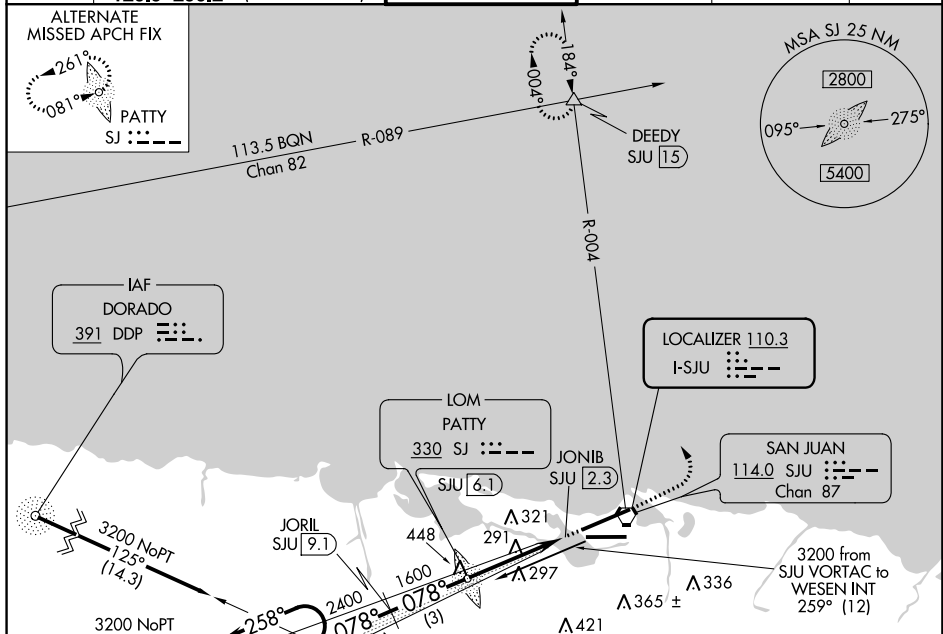


LOC I-SJU 110.3	APP CRS 078°	Rwy Idg 9384
		TDZE 9
		Apt Elev 9

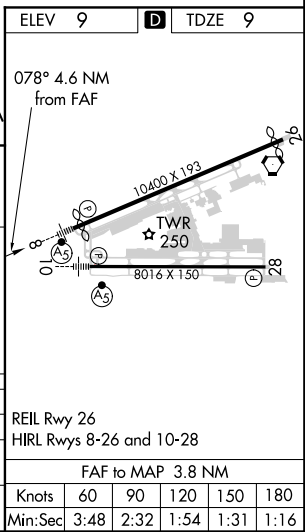
ILS or LOC RWY 8

LUIS MUNOZ MARIN INTL (SJU)(TJSJ)

For inoperative MALSR, increase S-ILS 8 all Cats visibility to 1 mile. DME Required.		MALSR 	MISSED APPROACH: Climb to 2000 then climbing left turn to 3000 on heading 320° and SJU VORTAC R-004 to DEEDY Int/SJU 15 DME and hold.			
D-ATIS 125.8	SAN JUAN APP CON 119.4 269.2 (WEST & SW) 120.9 290.2 (NORTH & EAST)		SAN JUAN TOWER 132.05 257.8	GND CON 121.9 348.6	CLNC DEL 126.4 284.6	CPDLC



One Minute Holding Pattern WESEN INT SJU 12 GS 3.00° TCH 46 VGS1 and ILS glidepath not coincident (VGS1 Angle 3.00/TCH 70).	WESEN INT SJU 12 JORIL SJU 9.1 PATTY LOM JONIB SJU 2.3			
	3200	2400	1600	3000
	← 258°	← 078°	← 078°	← 320°
	← 078°	← 078°	← 078°	← 320°
CATEGORY	A	B	C	D
S- ILS-8	311-1/2		302 (400-1/2)	
S- LOC-8	560-1/2	551 (600-1/2)	560-1 551 (600-1)	560-1 1/4 551 (600-1 1/4)
CIRCLING	600-1	591 (600-1)	600-1 1/2 591 (600-1 1/2)	600-2 591 (600-2)



SE-3, 10 OCT 2019 to 07 NOV 2019

SE-3, 10 OCT 2019 to 07 NOV 2019