

(VERMO5.VERMO) 17285

VERMO FIVE DEPARTURE

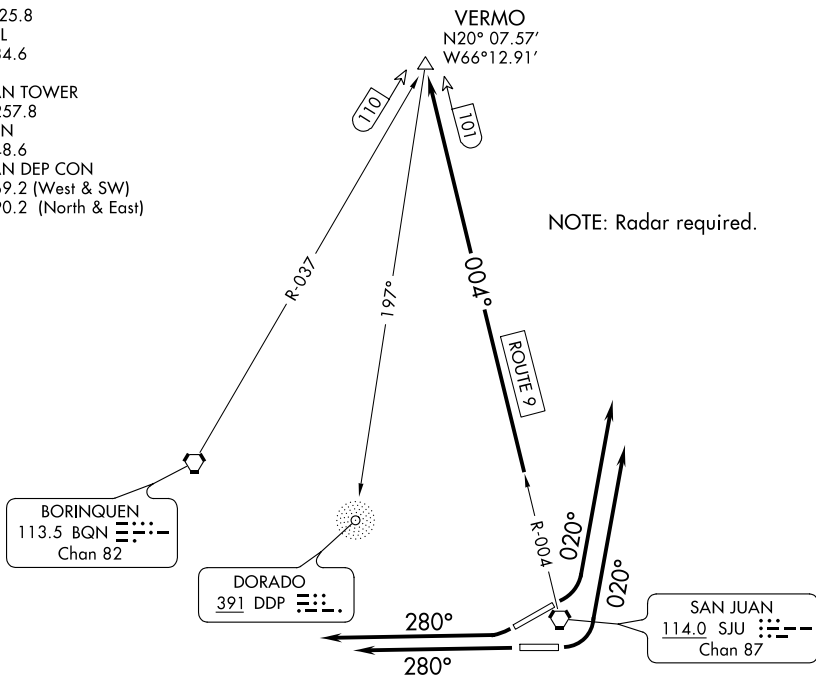
AL-784 (FAA)

LUIS MUNOZ MARIN INTL (SJU)(TJSJ)

SAN JUAN, PUERTO RICO

D-ATIS 125.8
 CLNC DEL
 126.4 284.6
 CPDLC
 SAN JUAN TOWER
 132.05 257.8
 GND CON
 121.9 348.6
 SAN JUAN DEP CON
 119.4 269.2 (West & SW)
 120.9 290.2 (North & East)

VERMO
 N20° 07.57'
 W66° 12.91'



NOTE: Radar required.

BORINQUEN
 113.5 BQN
 Chan 82

DORADO
 391 DDP

SAN JUAN
 114.0 SJU
 Chan 87

TAKEOFF MINIMUMS
 Rwy 8, 10, 26, 28: Standard.

NOTE: Chart not to scale.

DEPARTURE ROUTE DESCRIPTION

TAKEOFF RUNWAY 8: Climbing left turn heading 020° or as assigned by ATC, expect vectors to intercept SJU R-004 to VERMO INT. Thence. . . .

TAKEOFF RUNWAY 10: Climbing left turn heading 020° or as assigned by ATC, expect vectors to intercept SJU R-004 to VERMO INT. Thence. . . .

TAKEOFF RUNWAY 26: Climb heading 280° or as assigned by ATC, expect vectors to intercept SJU R-004 to VERMO INT. Thence. . . .

TAKE OFF RUNWAY 28: Climb heading 280° or as assigned by ATC, expect vectors to intercept SJU R-004 to VERMO INT. Thence. . . .

. . . . maintain 5000 unless assigned lower altitude. Expect clearance to FL280, or requested altitude if lower, ten minutes after departure.

VERMO FIVE DEPARTURE

(VERMO5.VERMO) 06JAN94

SAN JUAN, PUERTO RICO
 LUIS MUNOZ MARIN INTL (SJU)(TJSJ)

SE-3, 10 OCT 2019 to 07 NOV 2019

SE-3, 10 OCT 2019 to 07 NOV 2019