

LOC I-BLF 109.5	APP CRS 229°	Rwy Idg TDZE Apt Elev	4743 2857 2857
---------------------------	------------------------	-----------------------------	---

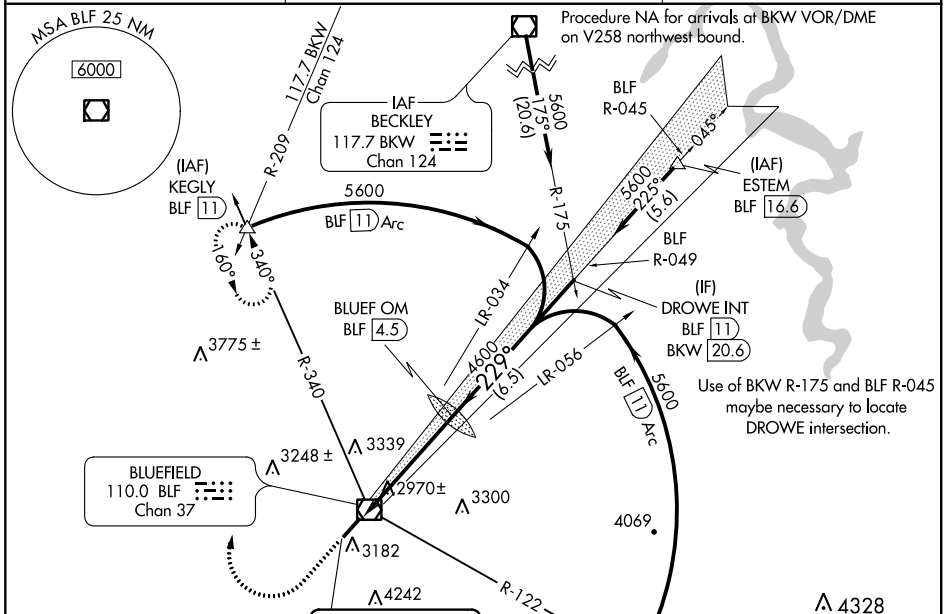
ILS or LOC RWY 23

MERCER COUNTY (BLF)

⚠ Autopilot coupled approach NA below 3600 MSL. When local altimeter setting not received, use Beckley altimeter setting and increase all DA 443 feet and all MDA 460 feet; increase S-ILS 23 all Cats visibility 2½ mile and S-LOC 23 Cat A visibility 1¼ mile, Cat B to 1½ mile and Cats C and D to 3 miles. Circling NA southeast of Rwy 5-23.

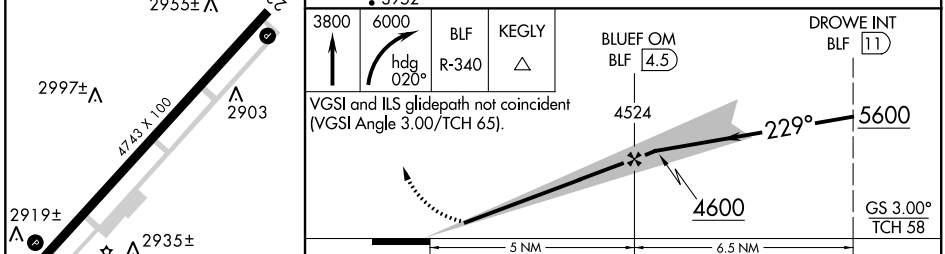
MISSED APPROACH: Climb to 3800 then climbing right turn to 6000 on heading 020° and BLF VOR/DME R-340 to KEGLY INT/BLF 11 DME and hold.

ASOS 132.725	INDIANAPOLIS CENTER 126.575 257.85	CTAF 122.9
------------------------	--	----------------------



ELEV 2857	D TDZE 2857
229° 5 NM from FAF	
2890±	2955±
2997±	2903
2919±	2935±
2913	

LOCALIZER 109.5
I-BLF
3952
3519



CATEGORY	A	B	C	D
S-ILS 23		3157-1	300 (300-1)	3157- ⁷ / ₈ 300 (300- ⁷ / ₈)
S-LOC 23	3520-1	663 (700-1)	3520-1 ³ / ₄ 663 (700-1 ³ / ₄)	3520-2 663 (700-2)
CIRCLING	3520-1	663 (700-1)	3560-2 703 (800-2)	3560-2 ¹ / ₄ 703 (800-2 ¹ / ₄)

FAF to MAP 5 NM					
Knots	60	90	120	150	180
Min:Sec	5:00	3:20	2:30	2:00	1:40

NE-4, 10 OCT 2019 to 07 NOV 2019

NE-4, 10 OCT 2019 to 07 NOV 2019