

WAAS CH <b>50207</b> <b>W23A</b>	APP CRS <b>229°</b>	Rwy Idg <b>4743</b> TDZE <b>2856</b> Apt Elev <b>2857</b>
--	------------------------	---

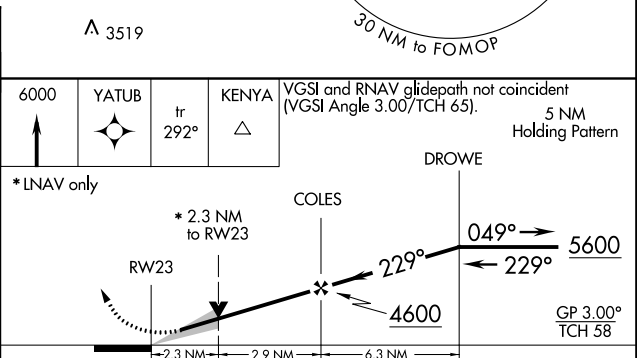
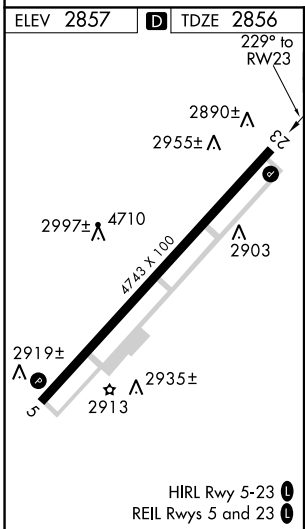
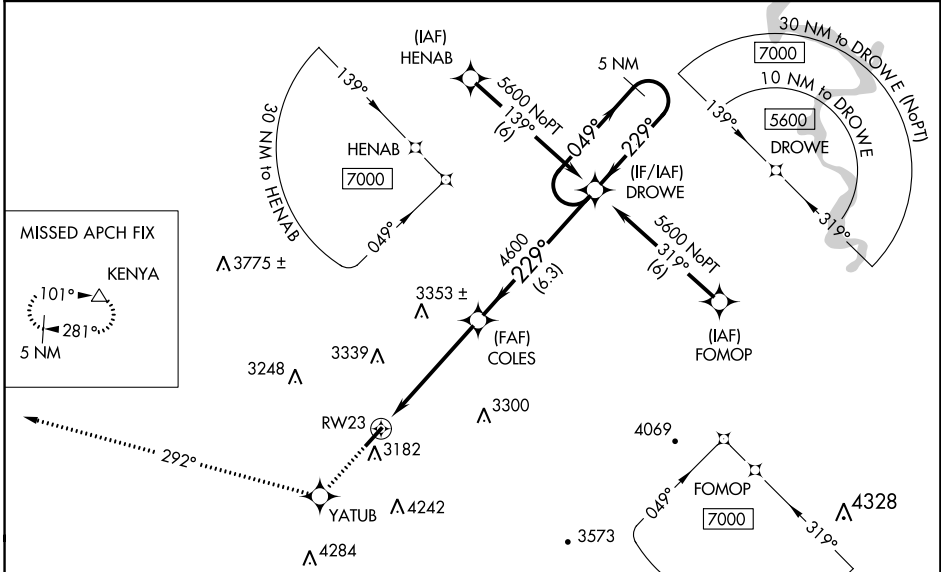
# RNAV (GPS) RWY 23

MERCER COUNTY (BLF)

**⚠** DME/DME RNP-0.3 NA. Circling NA southeast Rwy 5-23. VDP NA when using Beckley altimeter setting. When local altimeter setting not received, use Beckley altimeter setting and increase all DA 443 feet and all MDA 460 feet; increase LPV all Cats visibility to 2½ miles, LNAV Cat A visibility to 1¼ miles, Cat B to 1½ miles and Cat C and D to 3 miles.

MISSED APPROACH: Climb to 6000 direct YATUB and via track 292° to KENYA and hold.

ASOS <b>132.725</b>	INDIANAPOLIS CENTER <b>126.575 257.85</b>	CTAF <b>122.9</b>
------------------------	--	----------------------



CATEGORY	A	B	C	D
LPV DA	3156-1 300 (300-1)			
LNAV MDA	3640-1 784 (800-1)	3640-1¼ 784 (800-1¼)	3640-2¼ 784 (800-2¼)	3640-2½ 784 (800-2½)
CIRCLING	3640-1 783 (800-1)	3640-1¼ 783 (800-1¼)	3640-2¼ 783 (800-2¼)	3640-2½ 783 (800-2½)

NE-4, 10 OCT 2019 to 07 NOV 2019

NE-4, 10 OCT 2019 to 07 NOV 2019