

| | | | |
|---|------------------------|-----------------------------|---|
| VOR/DME BLF 110.0 Chan 37 | APP CRS 225° | Rwy Idg TDZE Apt Elev | 4743 2857 2857 |
|---|------------------------|-----------------------------|---|

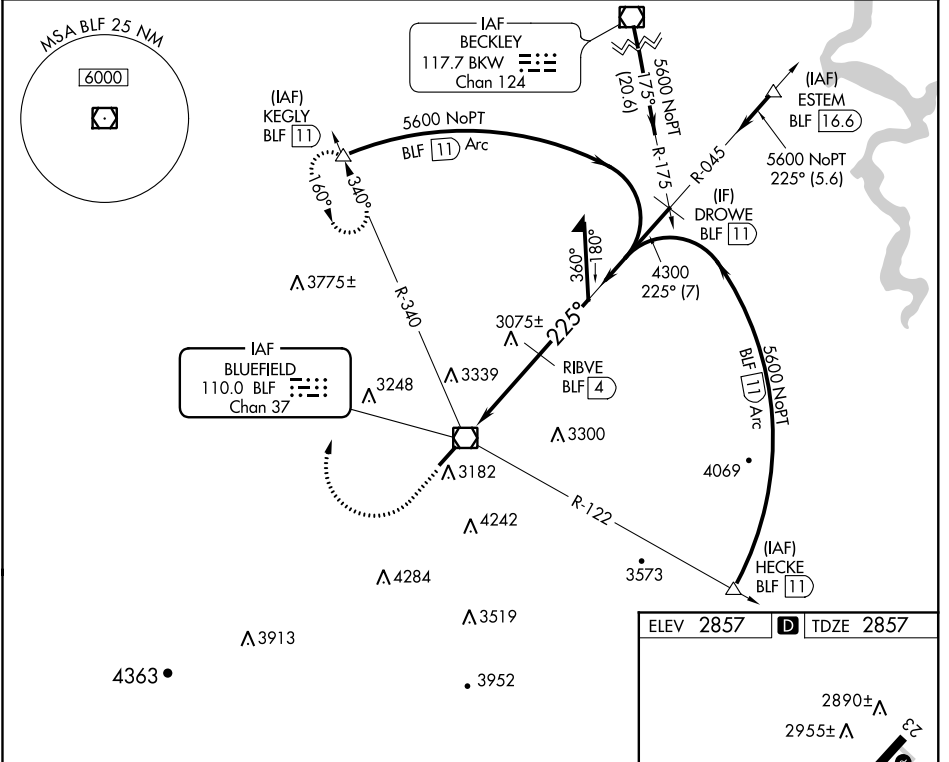
VOR RWY 23

MERCER COUNTY (BLF')

⚠ DME required. When local altimeter setting not received, use Beckley altimeter setting and increase all MDA 460 feet; increase S-23 visibility Cat A ¼ mile, Cat B ½ mile, Cat C 1 ½ mile, Cat D 1 ¼ mile; increase Circling visibility Cat A ¼ mile, Cat B ½ mile, Cat C 1 mile, Cat D ¾ mile. VDP NA when using Beckley altimeter setting. Circling NA southeast of Rwy 5-23.

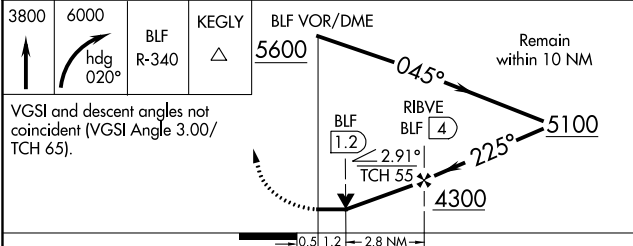
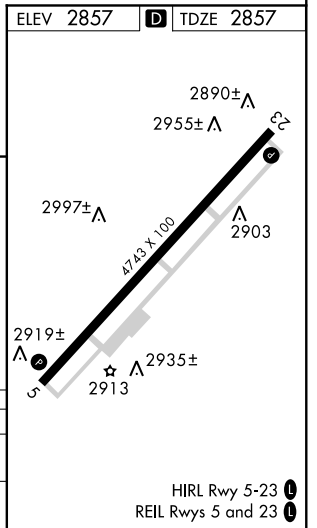
MISSED APPROACH: Climb to 3800 then climbing right turn to 6000 on heading 020° and BLF R-340 to KEGLY/BLF 11 DME and hold.

| | | |
|------------------------|--|----------------------|
| ASOS 132.725 | INDIANAPOLIS CENTER 126.575 257.85 | CTAF 122.9 |
|------------------------|--|----------------------|



NE-4, 10 OCT 2019 to 07 NOV 2019

NE-4, 10 OCT 2019 to 07 NOV 2019



| CATEGORY | A | B | C | D |
|----------|--------|-------------|---------------------------|---------------------------|
| S-23 | 3440-1 | 583 (600-1) | 3440-1 ½ 583 (600-1 ½) | 3440-1 ¾ 583 (600-1 ¾) |
| CIRCLING | 3440-1 | 583 (600-1) | 3560-2 703 (800-2) | 3560-2 ¼ 703 (800-2 ¼) |