

(CONLE3.CONLE) 17173

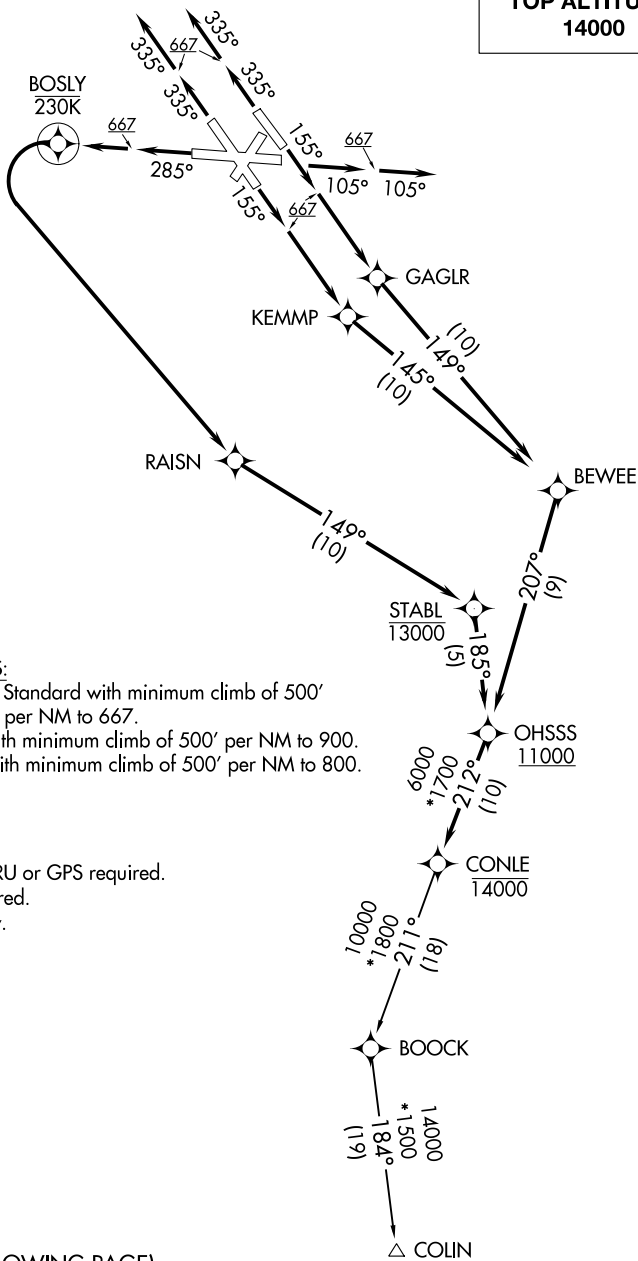
AL-804 (FAA)

BALTIMORE/  
WASHINGTON INTL THURGOOD MARSHALL (BWI)  
BALTIMORE, MARYLAND

# CONLE THREE DEPARTURE (RNAV)

D-ATIS  
115.1 127.8  
CLNC DEL  
118.05  
CPDLC  
GND CON  
121.9  
BALTIMORE TOWER  
119.4 257.8  
POTOMAC DEP CON  
124.55 317.425

**TOP ALTITUDE:  
14000**



**TAKEOFF MINIMUMS:**

Rwys 10, 15L/R, 28: Standard with minimum climb of 500' per NM to 667.

Rwy 33L: Standard with minimum climb of 500' per NM to 900.

Rwy 33R: Standard with minimum climb of 500' per NM to 800.

NOTE: RNAV 1

NOTE: DME/DME/IRU or GPS required.

NOTE: RADAR required.

NOTE: Turbojets only.

(NARRATIVE ON FOLLOWING PAGE)

(NOTES CONTINUED ON FOLLOWING PAGE)

NOTE: Chart not to scale.

# CONLE THREE DEPARTURE (RNAV)

BALTIMORE/  
WASHINGTON INTL THURGOOD MARSHALL (BWI)  
BALTIMORE, MARYLAND

(CONLE3.CONLE) 04FEB16

NE-3, 10 OCT 2019 to 07 NOV 2019

NE-3, 10 OCT 2019 to 07 NOV 2019