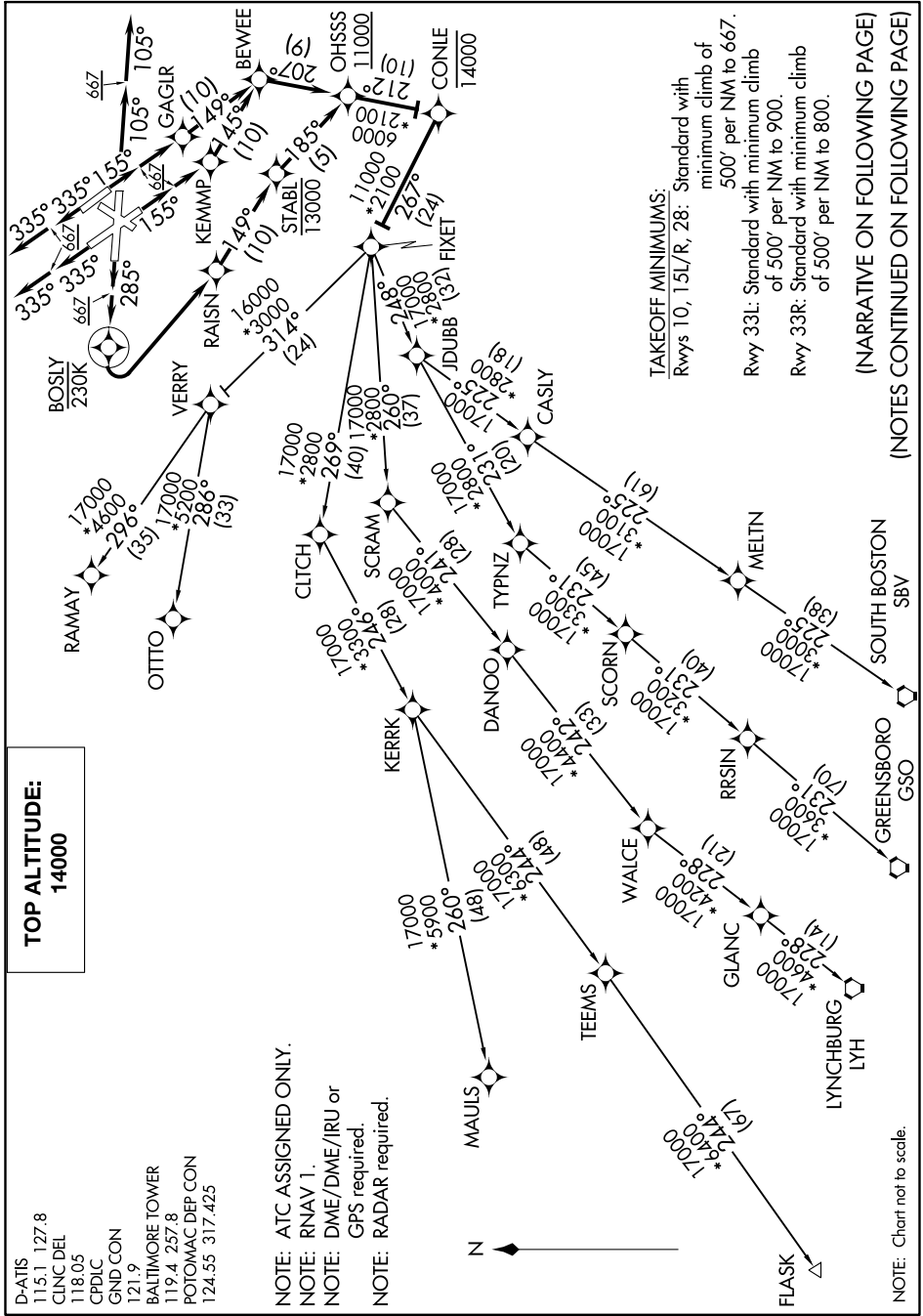


FIXET TWO DEPARTURE (RNAV)

NE-3, 10 OCT 2019 to 07 NOV 2019



TOP ALTITUDE:
14000

D-ATIS 115.1 127.8
 CLNC DEL 118.05
 CPDLC
 GND CON 121.9
 BALTIMORE TOWER 119.4 257.8
 POTOMAC DEP CON 124.55 317.425

NOTE: ATC ASSIGNED ONLY.
 NOTE: RNAV 1.
 NOTE: DME/DME/IRU or GPS required.
 NOTE: RADAR required.

TAKEOFF MINIMUMS:
 Rwy 10, 15L/R, 28: Standard with minimum climb of 500' per NM to 667.
 Rwy 33L: Standard with minimum climb of 500' per NM to 900.
 Rwy 33R: Standard with minimum climb of 500' per NM to 800.

(NARRATIVE ON FOLLOWING PAGE)
(NOTES CONTINUED ON FOLLOWING PAGE)

NOTE: Chart not to scale.

NE-3, 10 OCT 2019 to 07 NOV 2019