

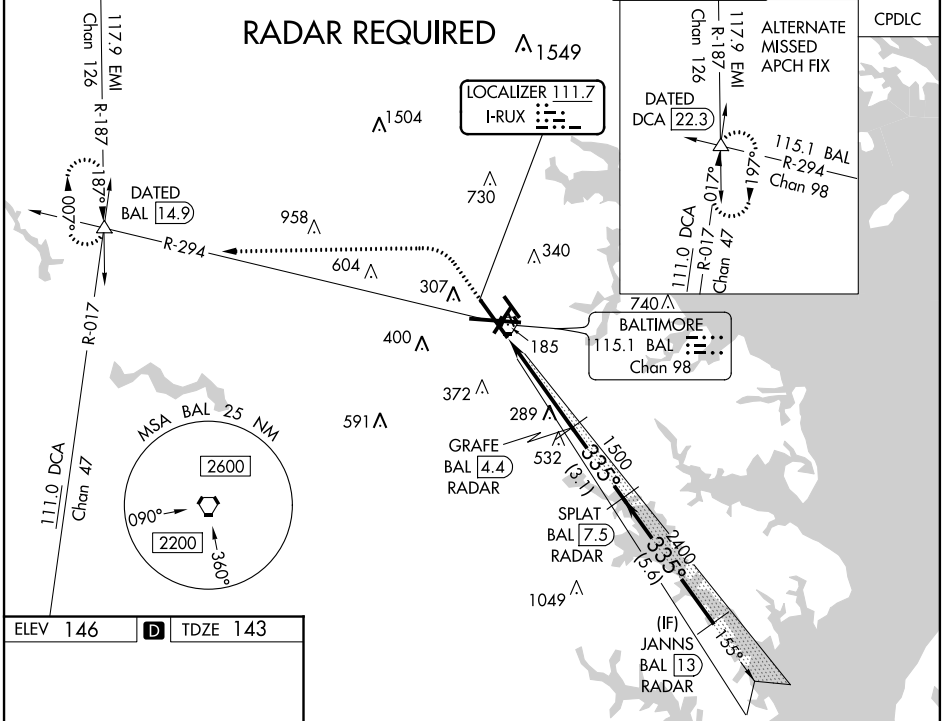
LOC I-RUX <b>111.7</b>	APP CRS <b>335°</b>	Rwy ldg TDZE Apt Elev	<b>8301</b> <b>143</b> <b>146</b>
---------------------------	------------------------	-----------------------------	---

**ILS RWY 33L (SA CAT I & II)**  
BALTIMORE/WASHINGTON INTL THURGOOD MARSHALL (BWI)

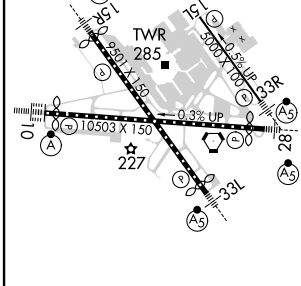
**⚠** DME or Radar required. Simultaneous approach authorized with ILS or LOC Rwy 33R. DME from BAL VORTAC. SA CAT I: Requires specific OPSPEC, MSPEC, or LOA approval and use of HUD to DH. SA CAT II: Reduced lighting; Requires specific OPSPEC, MSPEC, or LOA approval and use of autoland or HUD to touchdown.

**MALSR**  
**AS**  
MISSED APPROACH: Climb to 600 then climbing left turn to 2600 on heading 280° and BAL R-294 to DATED INT/BAL 14.9 DME and hold.

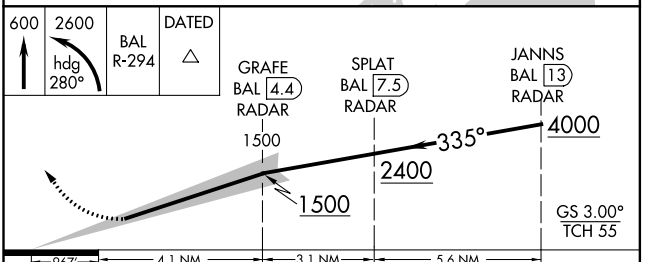
D-ATIS <b>115.1 127.8</b>	POTOMAC APP CON (020°-100°) <b>119.7 290.475</b> (131°-180°) (101°-130°) <b>124.55 317.425</b> (181°-019°)	BALTIMORE TOWER <b>119.4 257.8</b>	GND CON <b>121.9</b>	CLNC DEL <b>118.05</b>
------------------------------	--	---------------------------------------	-------------------------	---------------------------



ELEV 146	<b>D</b>	TDZE 143
----------	----------	----------



TDZ/CL Rws 10 and 33L  
REIL Rws 15L and 33R  
HIRL all rws



CATEGORY	A	B	C
S-ILS 33L	SA CAT I RA 186/14	150	DA 293
S-ILS 33L	SA CAT II RA 132/12	100	DA 243

**SA CATEGORY I & II ILS - SPECIAL AIRCREW & AIRCRAFT CERTIFICATION REQUIRED**

NE-3, 10 OCT 2019 to 07 NOV 2019

NE-3, 10 OCT 2019 to 07 NOV 2019