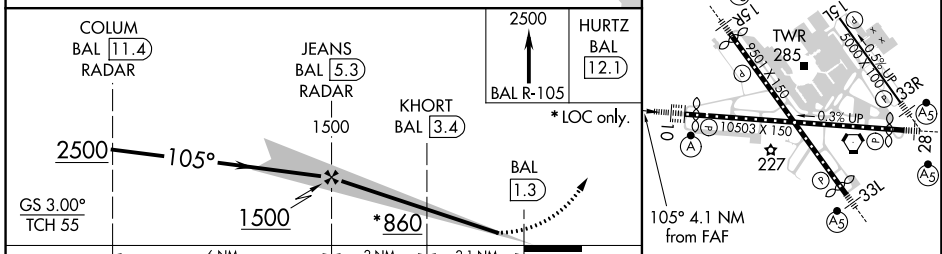
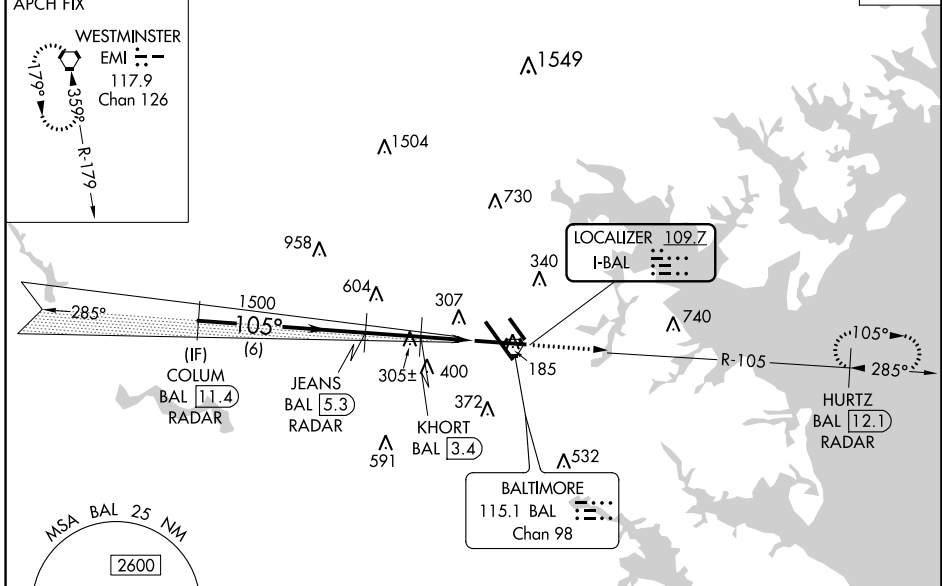


LOC I-BAL <b>109.7</b>	APP CRS <b>105°</b>	Rwy Idg <b>9953</b> TDZE <b>143</b> Apt Elev <b>143</b>
---------------------------	------------------------	---

BALTIMORE/  
WASHINGTON INTL THURGOOD MARSHALL (BWI)  
**ILS or LOC RWY 10**

RADAR required for procedure entry. DME required.		ALSF-2 	MISSED APPROACH: Climb to 2500 on BAL VORTAC R-105 to HURTZ/BAL 12.1 DME/RADAR and hold.	
D-ATIS <b>115.1 127.8</b>	POTOMAC APP CON <b>119.0 282.275</b> (020°-100°) <b>119.7 290.475</b> (131°-180°) <b>124.55 317.425</b> (101°-130°) <b>128.7 307.9</b> (181°-019°)		BALTIMORE TOWER <b>119.4 257.8</b>	GND CON <b>121.9</b>
				CLNC DEL <b>118.05</b>

ALTERNATE MISSED APCH FIX CPDLC



CATEGORY	A	B	C	D
S-ILS 10	343/18 200 (200-½)			
S-LOC 10	580/24 437 (500-½)		580/40 437 (500-¾)	
CIRCLING	640-1 497 (500-1)	660-1 517 (600-1)	700-1½ 557 (600-1½)	860-2¼ 717 (800-2¼)

ELEV 143	D	TDZE 143			
TWR 285					
105° 4.1 NM from FAF					
TDZ/CL Rwy 10 and 33L					
REIL Rwy 15L and 33R					
HIRL all rwy					
FAF to MAP 4.1 NM					
Knots	60	90	120	150	180
Min:Sec	4:06	2:44	2:03	1:38	1:22

NE-3, 10 OCT 2019 to 07 NOV 2019

NE-3, 10 OCT 2019 to 07 NOV 2019