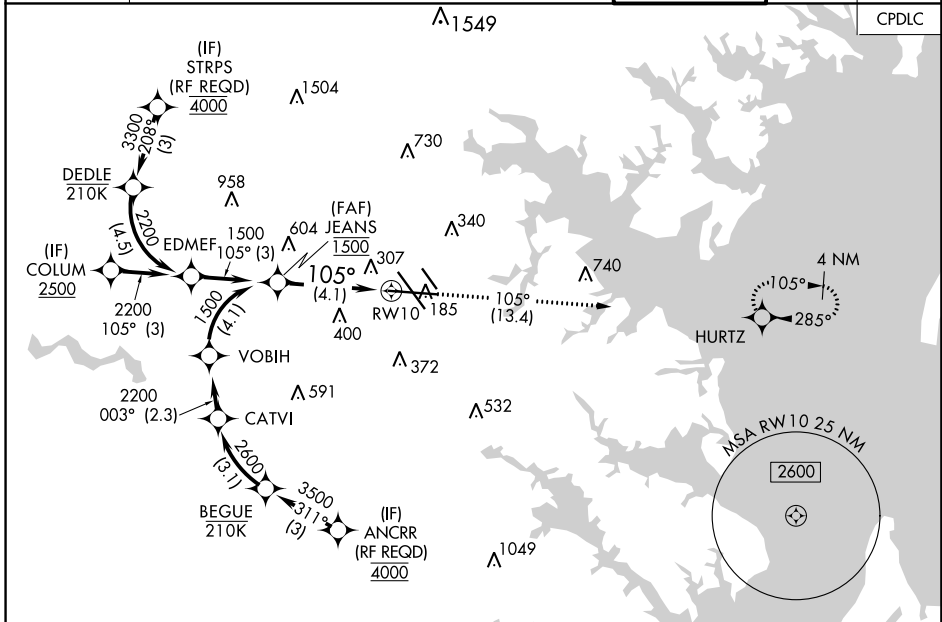


APP CRS	Rwy Idg	9953
105°	TDZE	143
	Apt Elev	143

RNAV (RNP) Z RWY 10

BALTIMORE/WASHINGTON INTL THURGOOD MARSHALL (BWI)

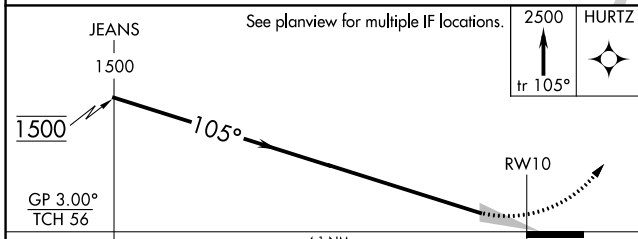
RNP AR APCH. ▼ For uncompensated Baro-VNAV systems, procedure NA below -12°C (11°F) or above 54°C (130°F). For inop ALS, increase RNP 0.11 all Cats visibility to RVR 4500, increase RNP 0.30 all Cats visibility to 1¾.	ALSF-2 	MISSED APPROACH: Climb to 2500 on track 105° to HURTZ and hold.
D-ATIS 115.1 127.8 119.0 282.275 POTOMAC APP CON (020°-100°) 119.7 290.475 (131°-180°) BALTIMORE TOWER GND CON CLNC DEL 124.55 317.425 (101°-130°) 128.7 307.9 (181°-019°) 119.4 257.8 121.9 118.05		



NE-3, 10 OCT 2019 to 07 NOV 2019

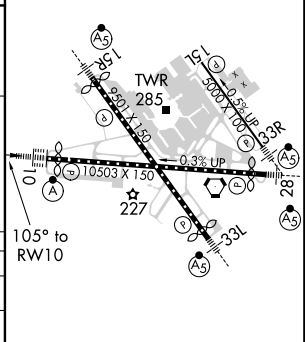
NE-3, 10 OCT 2019 to 07 NOV 2019

ELEV 143	D	TDZE 143
----------	----------	----------



CATEGORY	A	B	C	D
RNP 0.11 DA		448/24	305 (400-½)	
RNP 0.30 DA		626/60	483 (500-¼)	

AUTHORIZATION REQUIRED



TDZ/CL Rws 10 and 33L
 REIL Rws 15L and 33R
 HIRL all Rws