

APP CRS **285°**  
 Rwy ldg **9803**  
 TDZE **143**  
 Apt Elev **143**

# RNAV (RNP) Z RWY 28

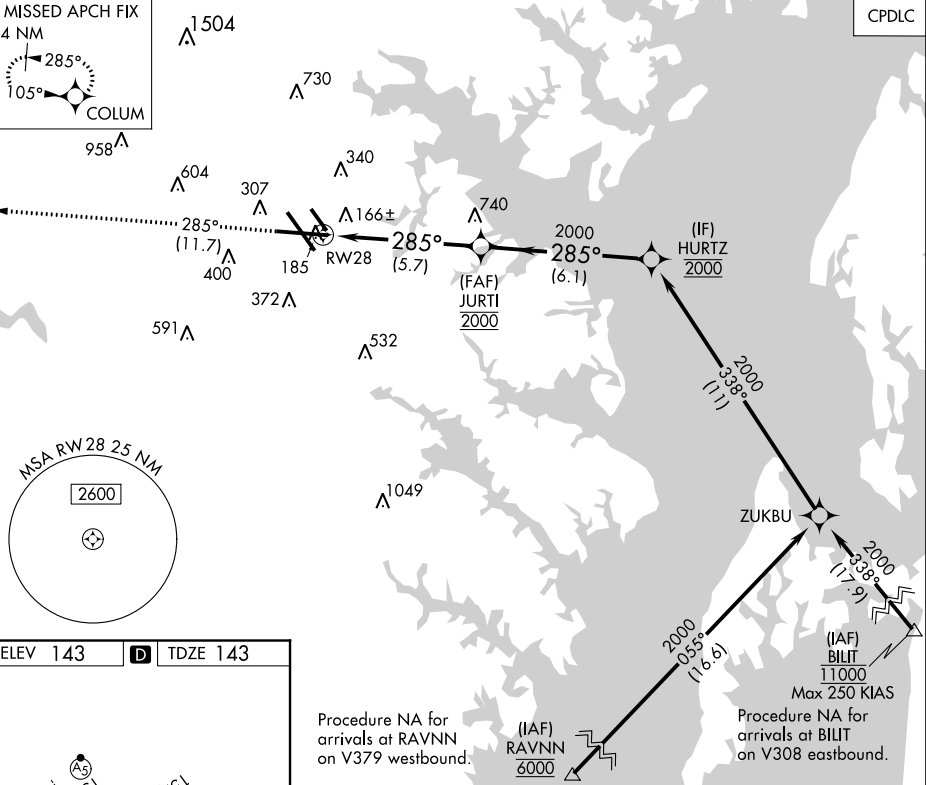
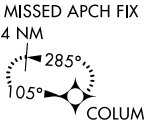
BALTIMORE/WASHINGTON INTL THURGOOD MARSHALL (BWI)

▼ For uncompensated Baro-VNAV systems, procedure NA below -12°C (11°F) or above 54°C (130°F). GPS Required. For inoperative MALSR, increase RNP 0.30 all Cats visibility to 1¼.

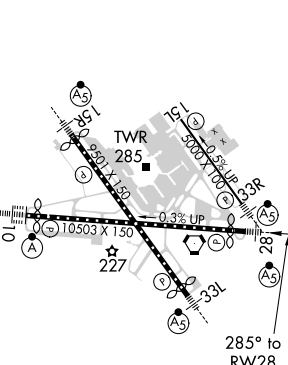


MISSED APPROACH: Climb to 2500 on track 285° to COLUM and hold.

|                              |   |                                       |                         |                           |
|------------------------------|---|---------------------------------------|-------------------------|---------------------------|
| D-ATIS<br><b>115.1 127.8</b> | POTOMAC APP CON<br>(020°-100°) <b>119.7 290.475</b> (131°-180°)<br>(101°-130°) <b>128.7 307.9</b> (181°-019°) | BALTIMORE TOWER<br><b>119.4 257.8</b> | GND CON<br><b>121.9</b> | CLNC DEL<br><b>118.05</b> |
|------------------------------|---|---------------------------------------|-------------------------|---------------------------|

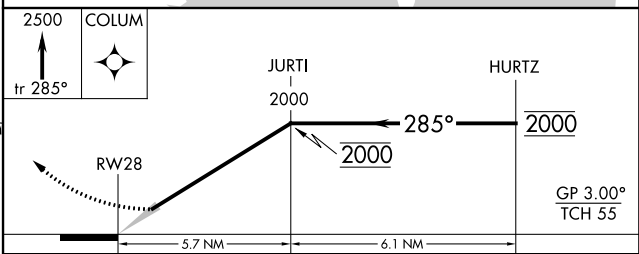


ELEV 143 **D** TDZE 143



Procedure NA for arrivals at RAVNN on V379 westbound.

Procedure NA for arrivals at BILIT on V308 eastbound.



|             |                     |   |   |   |
|-------------|---------------------|---|---|---|
| CATEGORY    | A                   | B | C | D |
| RNP 0.30 DA | 521/45 378 (400-7%) |   |   |   |

## AUTHORIZATION REQUIRED

TDZ/CL Rwy 10 and 33L  
 REIL Rwy 15L and 33R  
 HIRL all rwy

NE-3, 10 OCT 2019 to 07 NOV 2019

NE-3, 10 OCT 2019 to 07 NOV 2019