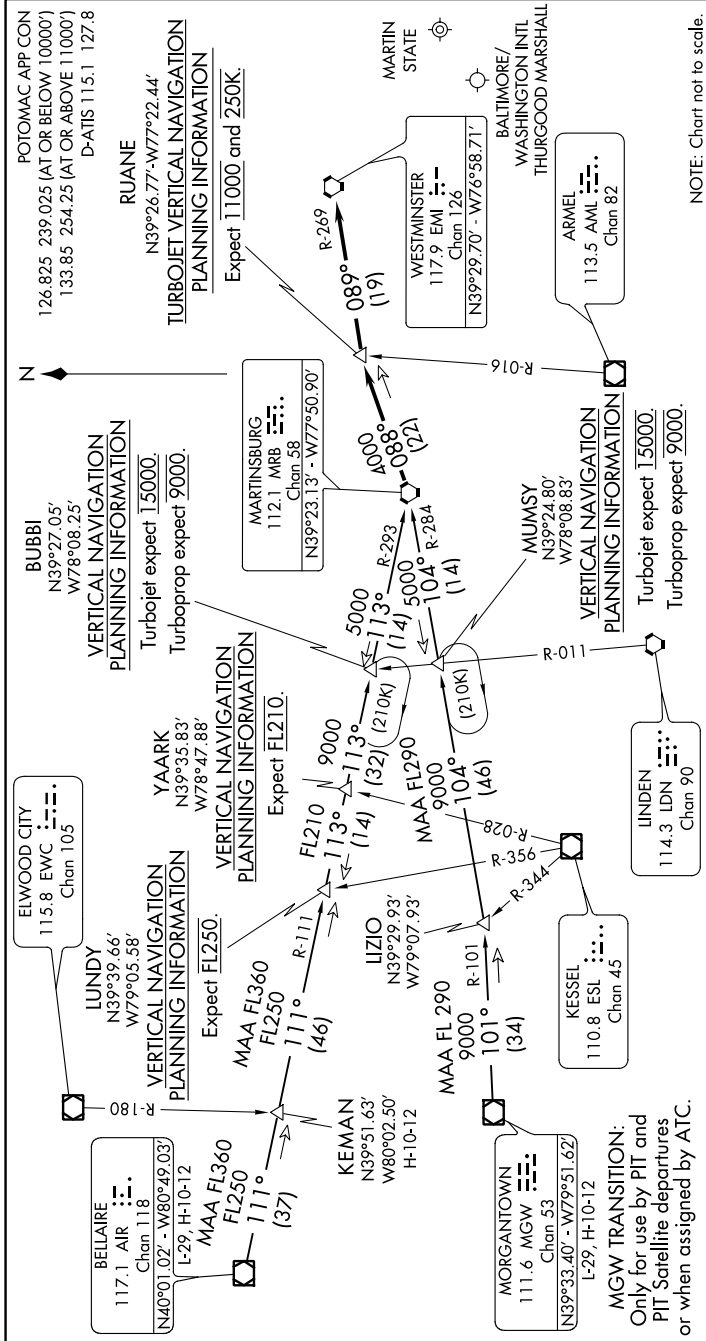


WESTMINSTER SIX ARRIVAL

BALTIMORE, MARYLAND

1610Z 10 OCT 2019 to 07 NOV 2019



ARRIVAL ROUTE DESCRIPTION

BELLAIRE TRANSITION (AIR.EMI6): From over AIR VOR/DME on AIR R-111 to LUNDY, then on MRB VORTAC R-293 to MRB VORTAC. Thence . . .

KEMAN TRANSITION (KEMAN.EMI6): From over KEMAN on AIR R-111 to LUNDY, then on MRB VORTAC R-293 to MRB VORTAC. Thence . . .

MORGANTOWN TRANSITION (MGW.EMI6): From over MGW VOR/DME on MGW R-101 to LIZIO, then on MRB VORTAC R-284 to MRB VORTAC. Thence . . .

. . . From MRB on MRB R-088 to RUANE, then on EMI VORTAC R-269 to EMI. Expect vectors to final approach course after EMI.

NE-3, 10 OCT 2019 to 07 NOV 2019

WESTMINSTER SIX ARRIVAL

BALTIMORE, MARYLAND