

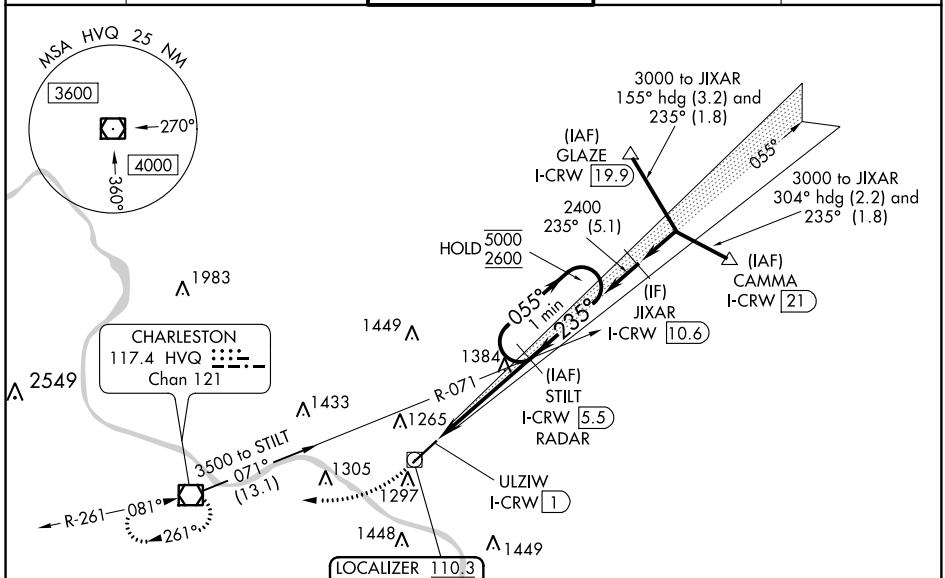
LOC/DME I-CRW 110.3 Chan 40	APP CRS 235°	Rwy Idg TDZE 931 Apt Elev 947
---	------------------------	---

ILS or LOC RWY 23

YEAGER (CRW)

DME or RADAR required.		ALSF-1 	MISSED APPROACH: Climb to 1800 then climbing right turn to 3000 direct HVQ VOR/DME and hold.
Autopilot coupled approach NA below 1450. Rwy 23 helicopter visibility reduction below RVR 4000 NA. Inop table does not apply to S-ILS 23. Inop table does not apply to S-LOC 23 Cats C/D. For inop ALS, increase S-LOC 23 Cat A/B visibility to RVR 5500.			

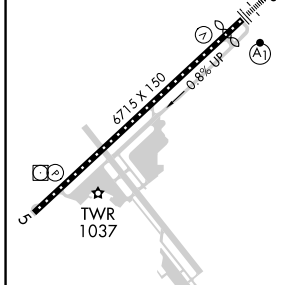
ATIS 127.6	CHARLESTON APP CON 124.1 269.125	CHARLESTON TOWER 125.7 257.8	GND CON 121.8 348.6	CLNC DEL 118.55
----------------------	--	--	-------------------------------	---------------------------



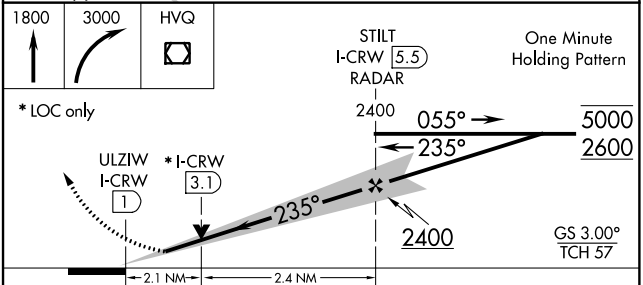
NE-4, 10 OCT 2019 to 07 NOV 2019

NE-4, 10 OCT 2019 to 07 NOV 2019

ELEV 947	D	TDZE 931
235° 4.5 NM from FAF		



HIRL Rwy 5-23 REIL Rwys 5					
FAF to MAP 4.5 NM					
Knots	60	90	120	150	180
Min:Sec	4:30	3:00	2:15	1:48	1:30



CATEGORY	A	B	C	D
S-ILS 23		1181/40	250 (300-¾)	
S-LOC 23		1640/40	709 (700-¾)	
CIRCLING	1640-1	693 (700-1)	1760-2½ 813 (900-2½)	1880-3 933 (1000-3)