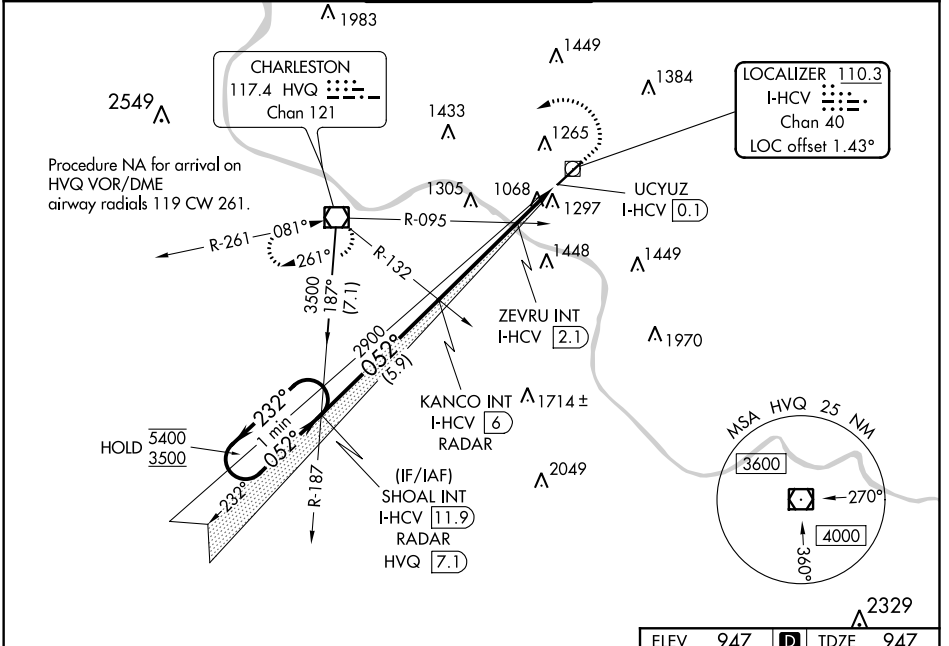


LOC/DME I-HCV <b>110.3</b> Chan <b>40</b>	APP CRS <b>052°</b>	Rwy Idg TDZE Apt Elev	<b>6215</b> <b>947</b> <b>947</b>
---	------------------------	-----------------------------	---

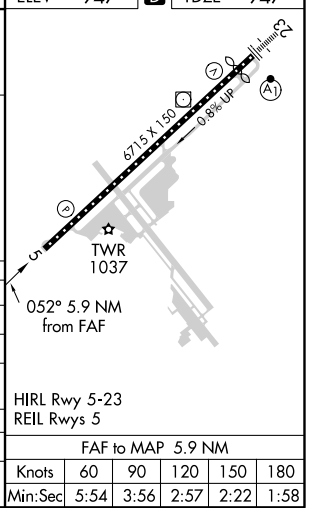
# ILS or LOC RWY 5

YEAGER (CRW)

DME required.		MISSED APPROACH: Climb to 1800 then climbing left turn to 3500 direct HVQ VOR/DME and hold.		
ATIS <b>127.6</b>	CHARLESTON APP CON <b>124.1 269.125</b>	CHARLESTON TOWER <b>125.7 257.8</b>	GND CON <b>121.8 348.6</b>	CLNC DEL <b>118.55</b>



One Minute Holding Pattern	SHOAL INT I-HCV [11.9] RADAR	KANCO INT I-HCV [6] RADAR	ZEVUR INT I-HCV [2.1]	I-HCV DME ANTENNA	UCUYUZ I-HCV [0.1]
5400 ← 232°	052° →	2900	*1640		
3500					
GS 3.00° TCH 56					
	5.9 NM	3.9 NM	1 NM	1 NM	0.1
CATEGORY	A	B	C	D	
S-ILS 5		1197/40	250 (300-¾)		
S-LOC 5	1640/55	693 (700-1)	1640-2	693 (700-2)	
<b>C</b> CIRCLING	1640-1	693 (700-1)	1760-2½ 813 (900-2½)	1880-3 933 (1000-3)	
ZEVUR FIX MINIMUMS (DUAL VOR RECEIVERS OR DME REQUIRED)					
S-LOC 5	1320/55	373 (400-1)			
<b>C</b> CIRCLING	1600-1	653 (700-1)	1760-2½ 813 (900-2½)	1880-3 933 (1000-3)	



NE-4, 10 OCT 2019 to 07 NOV 2019

NE-4, 10 OCT 2019 to 07 NOV 2019

Knots	60	90	120	150	180
	Min:Sec	5:54	3:56	2:57	2:22