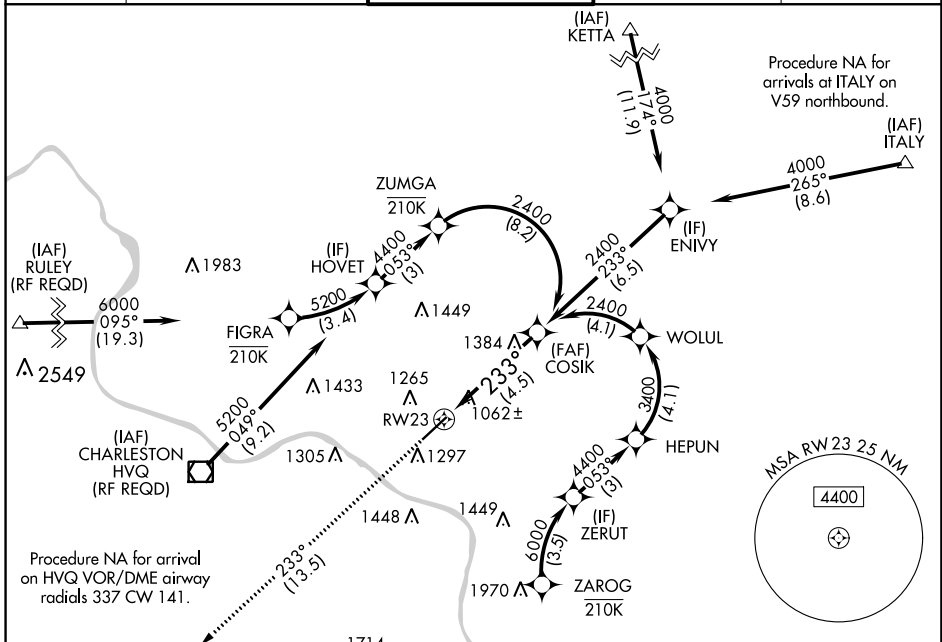


APP CRS 233°	Rwy Idg TDZE Apt Elev	6215 931 947
------------------------	-----------------------------	---

RNAV (RNP) Z RWY 23

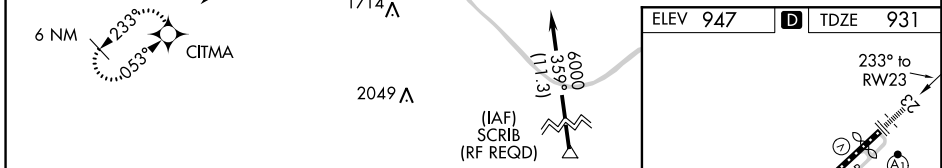
YEAGER (CRW)

RNP AR APCH.		ALSF-1 	MISSED APPROACH: Climb to 4000 on track 233° to CITMA and hold.	
<p>▼ For uncompensated Baro-VNAV systems, procedure NA below -15°C or above 54°C. For inop ALS, increase RNP 0.30 all Cats visibility to 1½ SM.</p>				
ATIS 127.6	CHARLESTON APP CON 124.1 269.125	CHARLESTON TOWER 125.7 257.8	GND CON 121.8 348.6	CLNC DEL 118.55

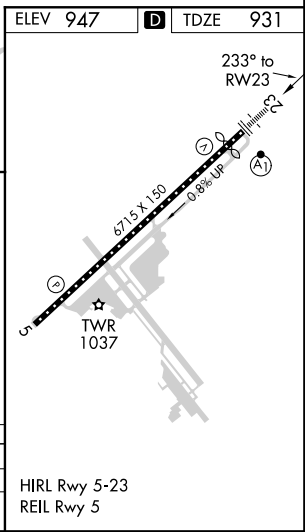


NE-4, 10 OCT 2019 to 07 NOV 2019

NE-4, 10 OCT 2019 to 07 NOV 2019



4000	CITMA	See planview for multiple IF locations.			
tr 233°					
RW23		COSIK		2400	
GP 3.00°		TCH 56		4.5 NM	
CATEGORY	A	B	C	D	
RNP 0.30 DA	1419/60		488 (500-1¼)		
AUTHORIZATION REQUIRED					



HIRL Rwy 5-23
REIL Rwy 5