

(LILLI4.LILLI) 18032

# LILLI FOUR DEPARTURE

JOHN MURTHA JOHNSTOWN-CAMBRIA COUNTY (JST)  
AL-898 (FAA) JOHNSTOWN, PENNSYLVANIA

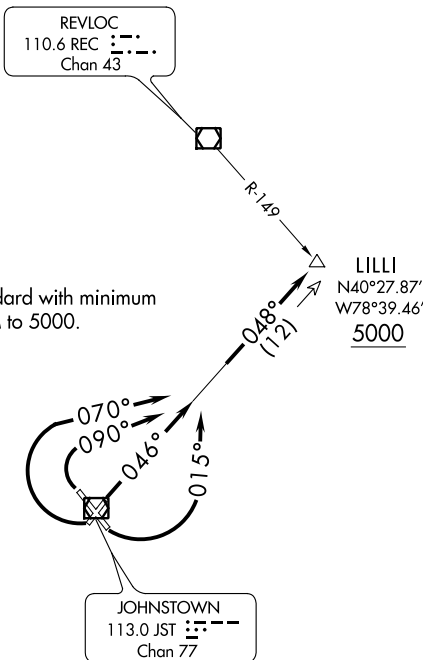
ATIS 118.325  
CLNC DEL  
126.85 235.775  
GND CON  
121.6  
JOHNSTOWN TOWER ★  
125.75 (CTAF)  
JOHNSTOWN DEP CON ★  
121.2 299.2

**TOP ALTITUDE:  
ASSIGNED BY ATC**

**TAKEOFF MINIMUMS:**

Rwys 5, 15, 23, 33: Standard with minimum  
ATC climb of 235' per NM to 5000.

LILLI  
N40°27.87'  
W78°39.46'  
5000



NOTE: During VFR conditions  
watch for opposing traffic  
on JST R-048.

NOTE: Chart not to scale.



## DEPARTURE ROUTE DESCRIPTION

TAKEOFF RUNWAY 5: Climb heading 046° to intercept JST R-048, Thence....

TAKEOFF RUNWAY 15: Turn left heading 015° to intercept JST R-048, Thence....

TAKEOFF RUNWAY 23: Turn right heading 070° to intercept JST R-048, Thence....

TAKEOFF RUNWAY 33: Turn right heading 090° to intercept JST R-048, Thence....

....via JST R-048 to cross LILLI INT at or above 5000 thence via (assigned route).

# LILLI FOUR DEPARTURE

(LILLI4.LILLI) 21JUL16

JOHNSTOWN, PENNSYLVANIA  
JOHN MURTHA JOHNSTOWN-CAMBRIA COUNTY (JST)

NE-4, 10 OCT 2019 to 07 NOV 2019

NE-4, 10 OCT 2019 to 07 NOV 2019