

WAAS CH 53429 W23A	APP CRS 229°	Rwy Idg TDZE Apt Elev	4386 2284 2284
--	------------------------	-----------------------------	---

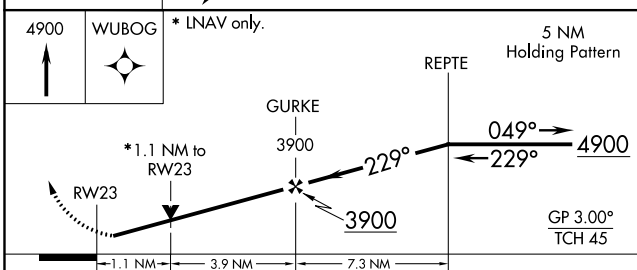
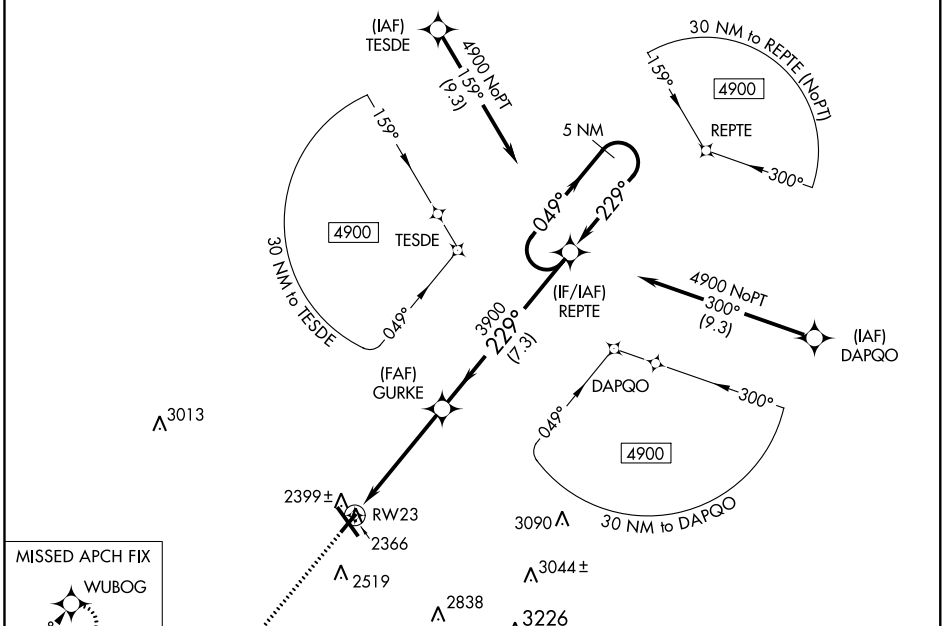
RNAV (GPS) RWY 23

JOHN MURTHA JOHNSTOWN-CAMBRIA COUNTY (JST)

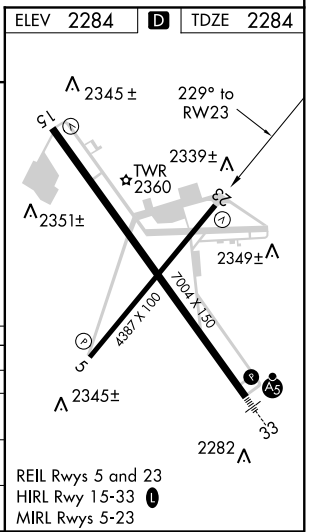
For uncompensated Baro-VNAV systems, LNAV/VNAV NA below -19°C (-2°F) or above 29°C (84°F). When local altimeter setting not received, procedure NA. DME/DME RNP-0.3 NA. Visibility reduction by helicopters NA.

MISSED APPROACH: Climb to 4900 direct WUBOG and hold.

ATIS 118.325	JOHNSTOWN APP CON * 121.2 299.2	JOHNSTOWN TOWER * 125.75 (CTAF) 0	GND CON 121.6	CLNC DEL 126.85 235.775	UNICOM 122.95
------------------------	---	---	-------------------------	-----------------------------------	-------------------------



CATEGORY	A	B	C	D
LPV DA		2534-3/4	250 (300-3/4)	
LNAV/VNAV DA		2584-1	300 (300-1)	
LNAV MDA		2660-1	376 (400-1)	
CIRCLING	2700-1	2740-1	2880-1 1/2	2880-2
	416 (500-1)	456 (500-1)	596 (600-1 1/2)	596 (600-2)



NE-4, 10 OCT 2019 to 07 NOV 2019

NE-4, 10 OCT 2019 to 07 NOV 2019