

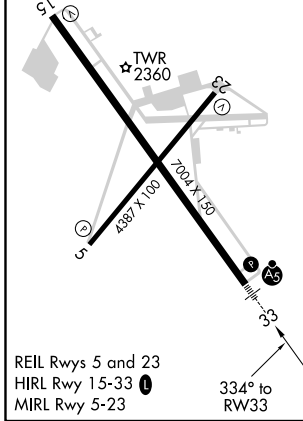
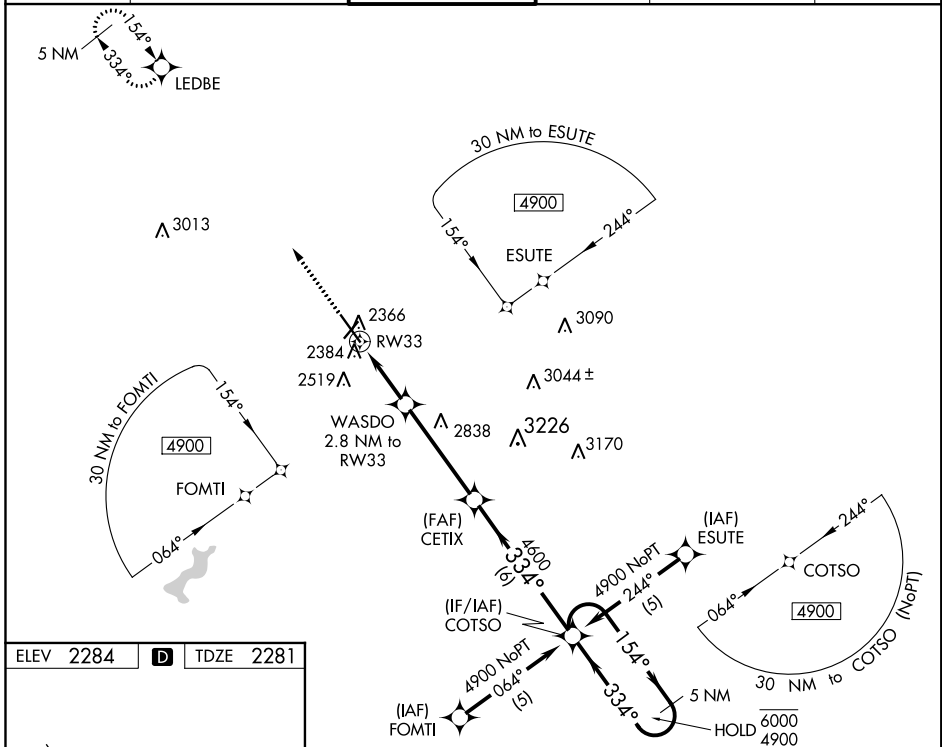
WAAS CH 61113 W33A	APP CRS 334°	Rwy Idg TDZE 2003 2281 Apt Elev 2284
--	------------------------	--

RNAV (GPS) RWY 33

JOHN MURTHA JOHNSTOWN-CAMBRIA CO (JST)

RNP APCH.	MALSR	MISSED APPROACH: Climb to 4800 direct LEDBE and hold.
<p>▼ Inop table does not apply to LNAV Cat D. For uncompensated Baro-VNAV systems, LNAV/VNAV NA below -19°C or above 54°C. For inop ALS increase LNAV/VNAV all Cats visibility to ½ SM and LNAV Cat C visibility to 1 SM.</p> <p>▲</p>		

ATIS 118.325	JOHNSTOWN APP CON * 121.2 299.2	JOHNSTOWN TOWER * 125.75 (CTAF) 0	GND CON 121.6	CLNC DEL 126.85 235.775	UNICOM 122.95
------------------------	---	---	-------------------------	-----------------------------------	-------------------------



JOHNSTOWN, PENNSYLVANIA
Amdt 1A 15AUG19

4800	LEDBE	VGSI and RNAV glidepath not coincident (VGSI Angle 3.00/TCH 53).	5 NM Holding Pattern
*LNAV only	WASDO 2.8 NM to RW33	CETIX 4600	COTSO 6000 154° → 4900 ← 334°
	RW33	3200*	4600
	1 NM	1.8 NM	4.2 NM
			6 NM

CATEGORY	A	B	C	D
LPV DA	2481-1/2 200 (200-1/2)			
LNAV/VNAV DA	2552-1/2 271 (300-1/2)			2552-3/4 271 (300-3/4)
LNAV MDA	2640-1/2	359 (400-1/2)	2640-5/8 359 (400-5/8)	2640-1 359 (400-1)
CIRCLING	2700-1 416 (500-1)	2880-1 596 (600-1)	2880-1/2 596 (600-1/2)	3000-2/4 716 (800-2/4)

NE-4, 10 OCT 2019 to 07 NOV 2019

NE-4, 10 OCT 2019 to 07 NOV 2019