

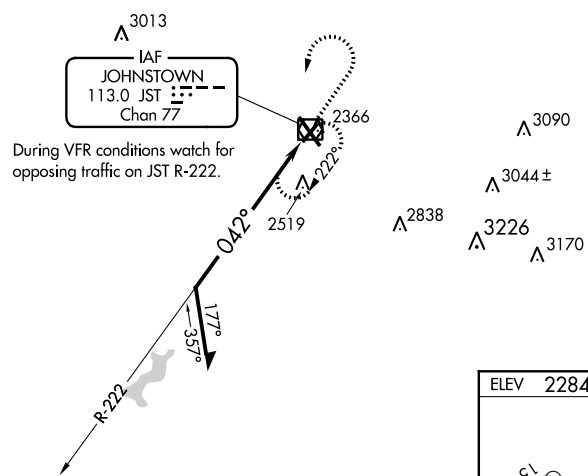
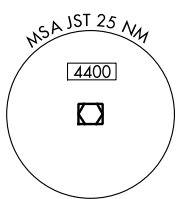
VOR/DME JST 113.0 Chan 77	APP CRS 042°	Rwy Idg TDZE Apt Elev 4386 2284 2284
---	------------------------	--

VOR RWY 5

JOHN MURTHA JOHNSTOWN-CAMBRIA COUNTY (JST)

▼ ▲ Rwy 5 helicopter visibility reduction below 3/4 SM NA.	MISSED APPROACH: Climb to 4200 then left turn direct JST VOR/DME and hold.
---	--

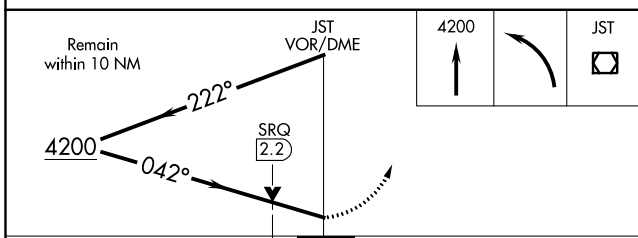
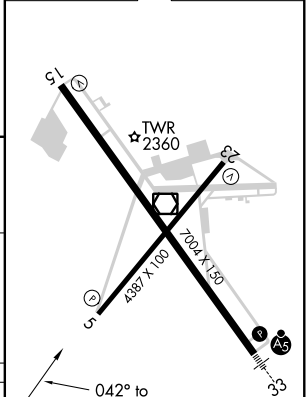
ATIS 118.325	JOHNSTOWN APP CON * 121.2 299.2	JOHNSTOWN TOWER * 125.75 (CTAF) 0	GND CON 121.6	CLNC DEL 126.85 235.775	UNICOM 122.95
------------------------	---	---	-------------------------	-----------------------------------	-------------------------



During VFR conditions watch for opposing traffic on JST R-222.

IAF
JOHNSTOWN
113.0 JST
Chan 77

ELEV 2284	D TDZE 2284
-----------	--------------------



CATEGORY	A	B	C	D
S-5	2880-1 596 (600-1)		2880-1 3/4 596 (600-1 3/4)	
C CIRCLING	2880-1 596 (600-1)		2880-1 3/4 596 (600-1 3/4)	3000-2 1/4 716 (800-2 1/4)

042° to JST VOR/DME
REIL Rwy 5 and 23
HIRL Rwy 15-33 **0**
MIRL Rwy 5-23

NE-4, 10 OCT 2019 to 07 NOV 2019

NE-4, 10 OCT 2019 to 07 NOV 2019