

VOR/DME JST 113.0 Chan 77	APP CRS 146°	Rwy Idg TDZE Apt Elev	7003 2276 2284
--	------------------------	-----------------------------	---

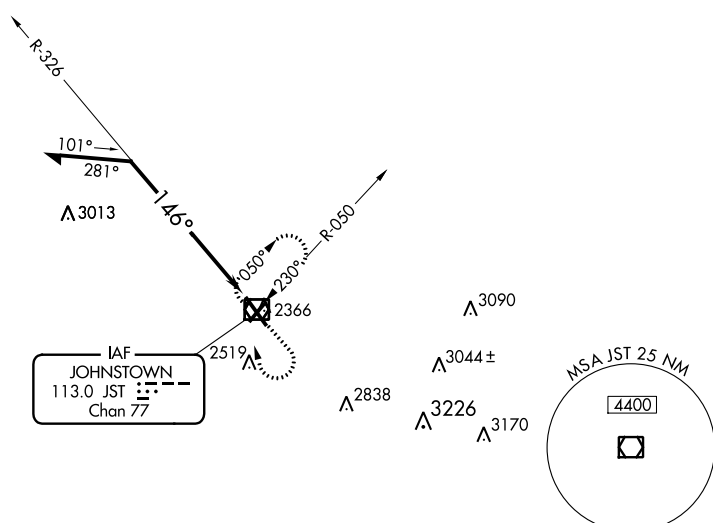
VOR Y RWY 15

JOHN MURTHA JOHNSTOWN-CAMBRIA COUNTY (JST)



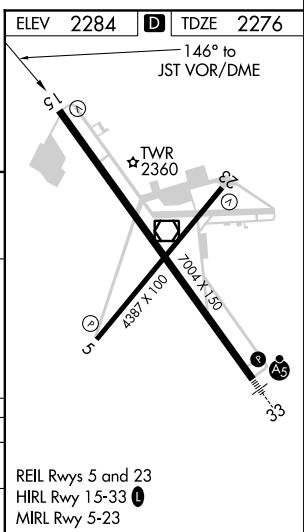
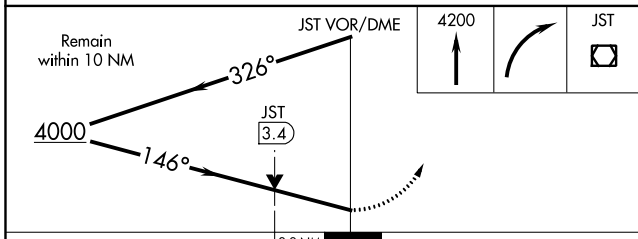
MISSED APPROACH: Climb to 4200 then right turn direct JST VOR/DME and hold.

ATIS 118.325	JOHNSTOWN APP CON * 121.2 299.2	JOHNSTOWN TOWER * 125.75 (CTAF)	GND CON 121.6	CLNC DEL 126.85 235.775	UNICOM 122.95
------------------------	---	---	-------------------------	-----------------------------------	-------------------------



NE-4, 10 OCT 2019 to 07 NOV 2019

NE-4, 10 OCT 2019 to 07 NOV 2019



CATEGORY	A	B	C	D
S-15	3240-1¼ 964 (1000-1¼)	3240-1½ 964 (1000-1½)	3240-3	964 (1000-3)
CIRCLING	3240-1¼ 956 (1000-1¼)	3240-1½ 956 (1000-1½)	3240-3	956 (1000-3)

REIL Rwy 5 and 23
HIRL Rwy 15-33
MIRL Rwy 5-23