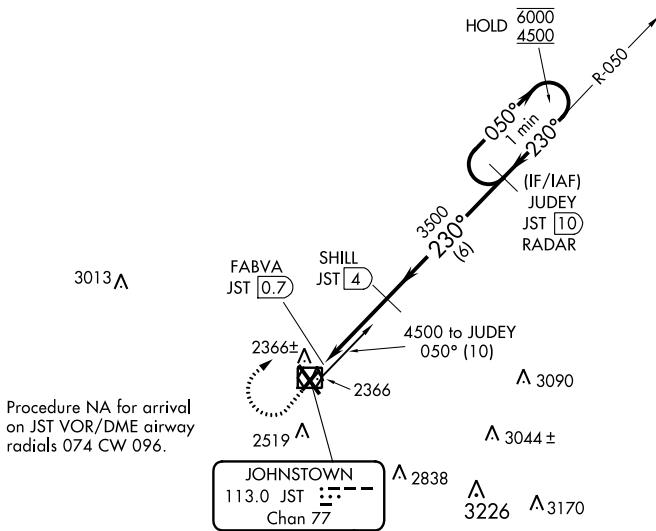


VOR/DME JST	APP CRS	Rwy Idg	4386
113.0	230°	TDZE	2284
Chan 77		Apt Elev	2284

VOR Z RWY 23

JOHN MURTHA JOHNSTOWN-CAMBRIA COUNTY (JST)

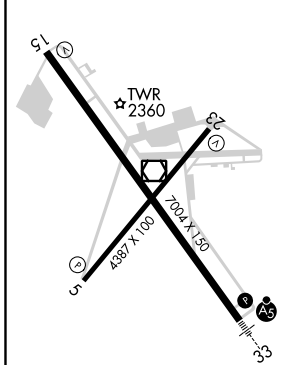
DME required.		MISSED APPROACH: Climb to 3000 then climbing right turn to 4500 on heading 075° and JST VOR/DME R-050 to JUDEY/JST 10 DME/RADAR and hold.			
Rwy 23 helicopter visibility reduction below 3/4 SM NA.					
ATIS	JOHNSTOWN APP CON *	JOHNSTOWN TOWER *	GND CON	CLNC DEL	UNICOM
118.325	121.2 299.2	125.75 (CTAF)	121.6	126.85 235.775	122.95



NE-4, 10 OCT 2019 to 07 NOV 2019

NE-4, 10 OCT 2019 to 07 NOV 2019

ELEV	2284		TDZE	2284
------	------	--	------	------



3000	4500	JST R-050	JUDEY JST 10 RADAR	One Minute Holding Pattern	
				JUDEY JST 10 RADAR	
		JST 1.2	SHILL JST 4	050°	6000
		FABVA JST 0.7		230°	4500
		2.99° TCH 45			
		3500			
		0.4	0.5	2.8 NM	6 NM
CATEGORY	A	B	C	D	
S-23	2620-1 336 (400-1)				
CIRCLING	2700-1 416 (500-1)	2880-1 596 (600-1)	2880-1½ 596 (600-1½)	3000-2¼ 716 (800-2¼)	

VOR Z RWY 23