

OXNARD, CALIFORNIA

# HI-TACAN RWY 21

TACAN NTD Chan <b>43</b>	APCH CRS <b>216°</b>	Rwy ldg <b>11,102</b> TDZE <b>13</b> Arprt Elev <b>13</b>
-----------------------------	-------------------------	---

JAL-925 [USN]

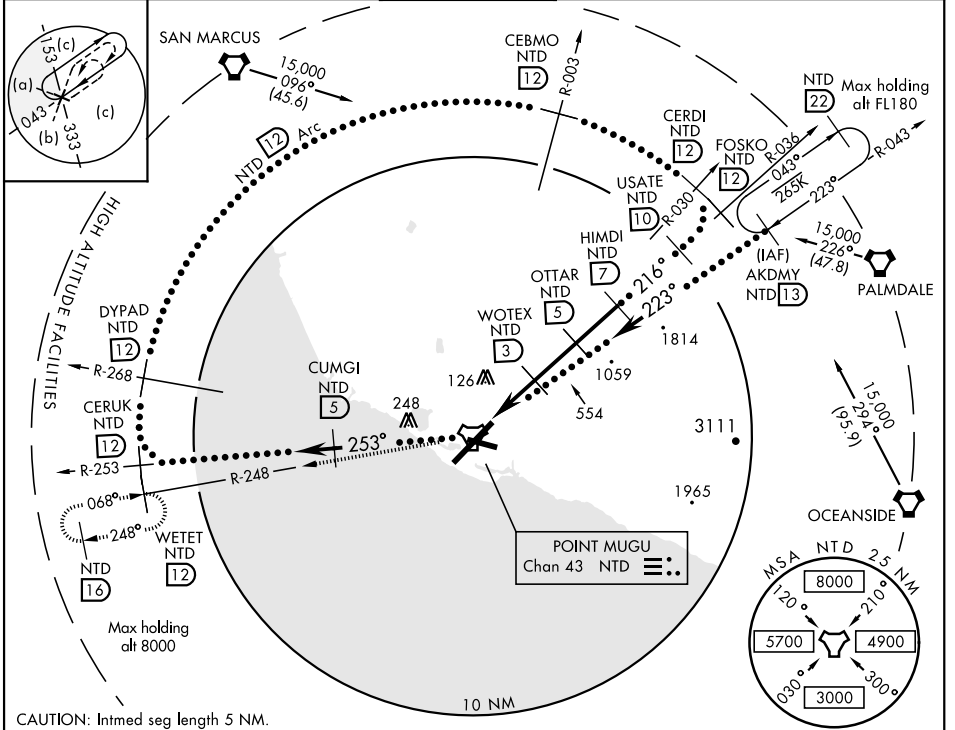
POINT MUGU NAS (NAVAL BASE VENTURA CO) (KNTD)

\* When ALS inop, increase CAT CDE vis to 1½ miles.  
 \*\* Circling not authorized E of Rwy 3-21.

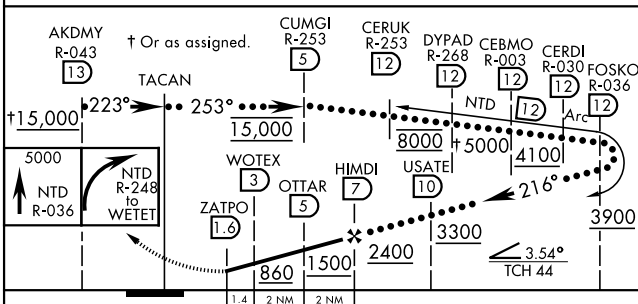


**MISSED APPROACH:** Climb to 5000 via NTD TACAN R-036 to NTD, then via NTD R-248 to WETET and hold, continue climb-in-hold to 5000.

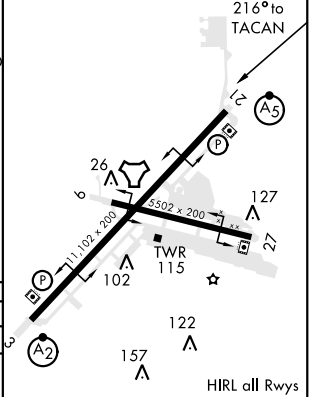
ATIS * <b>125.55 363.05</b>	POINT MUGU APP CON <b>128.65 307.275</b>	POINT MUGU TOWER * <b>124.85 290.375</b>	GND CON <b>121.6 360.2</b>	CLNC DEL <b>120.75 279.55</b>	ASR/PAR
--------------------------------	---	---	-------------------------------	----------------------------------	---------



CAUTION: Intmed seg length 5 NM.  
 EMERG SAFE ALT 100 NM 12,100



ELEV 13	TDZE 13
---------	---------



CATEGORY	C	D	E
S-21*	420-¾	407 (500-¾)	
CIRCLING **	480-1½ 467 (500-1½)	580-2 567 (600-2)	860-3 847 (900-3)

OXNARD, CALIFORNIA  
 Amdt 2 27APR17

34°07'N-119°07'W

POINT MUGU NAS (NAVAL BASE VENTURA CO) (KNTD)

# HI-TACAN RWY 21

SW-3, 10 OCT 2019 to 07 NOV 2019

SW-3, 10 OCT 2019 to 07 NOV 2019