

OXNARD, CALIFORNIA

ILS Z or LOC/DME RWY 21

LOC/DME I-RRG
109.3
 Chan **30**

APCH CRS
212°

Rwy Idg **11,102**
 TDZE **13**
 Arprt Elev **13**

AL-925 [USN]

POINT MUGU NAS
 (NAVAL BASE VENTURA CO)(KNTD)

▼ ** When ALS inop, increase vis CAT ABCD to ¾ mile.
 ** When ALS inop, increase vis CAT AB to 1 mile, CAT CD vis to 1½ miles.
 *** Circling not authorized E of Rwy 3-21.

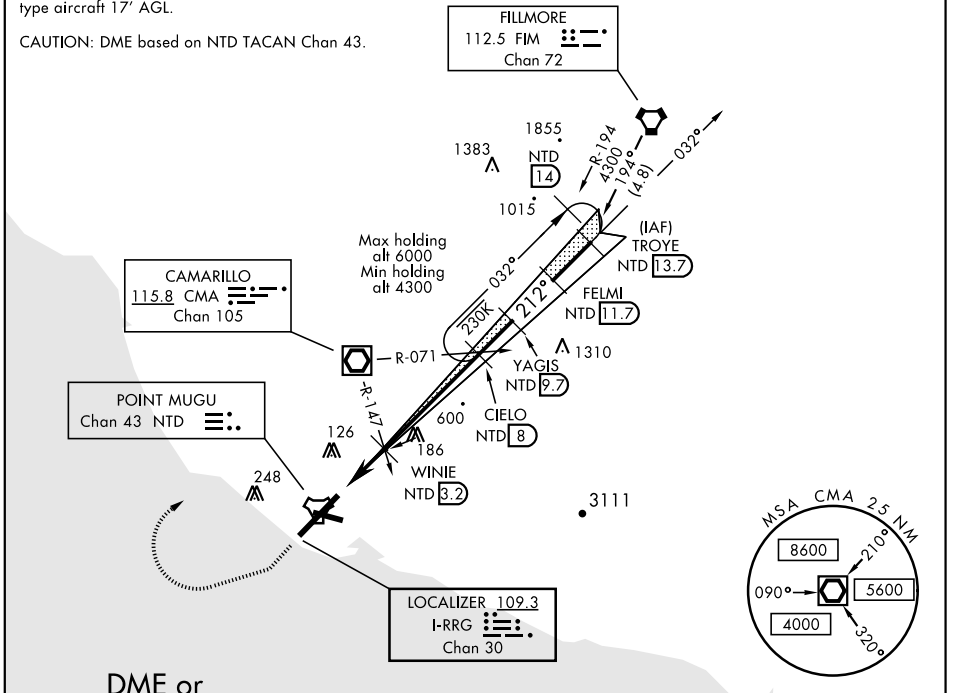


MISSED APPROACH: Climb to 500 via hdg 212°, then climbing right turn to 3000 via hdg 247° then climbing right turn to 5000 direct CMA VOR/DME, then via CMA R-071 to CIELO and hold.

ATIS ★ 125.55 363.05	POINT MUGU APP CON 128.65 307.275	POINT MUGU TOWER ★ 124.85 290.375	GND CON 121.6 360.2	CLNC DEL 120.75 279.55	ASR/PAR
--------------------------------	---	---	-------------------------------	----------------------------------	---------

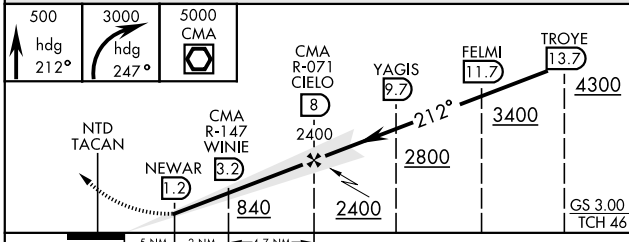
CAUTION: WCH for B-747/DC-10/C-17 type aircraft 17' AGL.

CAUTION: DME based on NTD TACAN Chan 43.



DME or RADAR REQUIRED

EMERG SAFE ALT 100 NM 12,100



ELEV 13	212° 7.2 NM from FAF
TDZE 13	

FAF to MAP 6.7 NM					
Knots	60	90	120	150	180
Min:Sec	6:42	4:28	3:21	2:41	2:14

CATEGORY	A	B	C	D
S-ILS 21*	213-½ 200 (200-½)			
S-LOC 21**	420-½	407 (500-½)	420-¾	407 (500-¾)
CIRCLING ***	440-1 427 (500-1)	480-1 467 (500-1)	480-1½ 467 (500-1½)	580-2 567 (600-2)

OXNARD, CALIFORNIA
 Amdt 2 27APR17

34°07'N-119°07'W

POINT MUGU NAS (KNTD)
 (NAVAL BASE VENTURA CO)

ILS Z or LOC/DME RWY 21

SW-3, 10 OCT 2019 to 07 NOV 2019

SW-3, 10 OCT 2019 to 07 NOV 2019