

OXNARD, CALIFORNIA

# RNAV (GPS) RWY 21

AL-925 (USN)

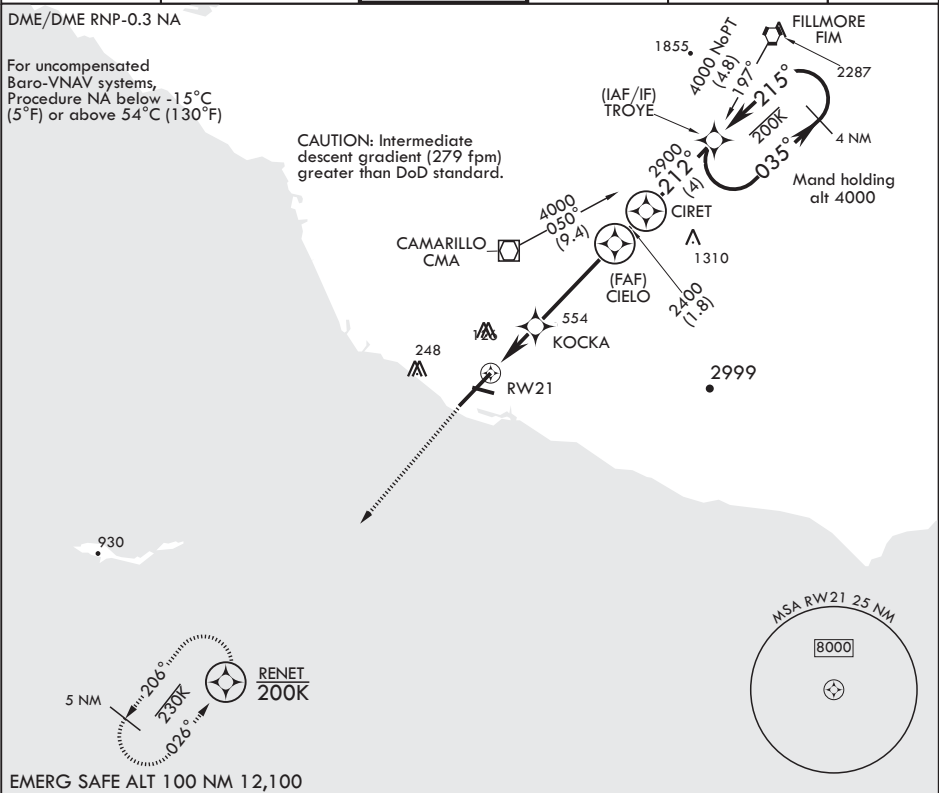
POINT MUGU NAS (NAVAL BASE VENTURA CO) (KNTD)

APCH CRS	Rwy Idg	11,102
212°	TDZE	13
	Arpt Elev	13

\* When ALS inop increase CAT ABCD vis to 7/8 mile.  
 \*\* When ALS inop, increase CAT AB vis to 1 mile; CAT CD vis to 1 1/8 miles.  
 \*\*\* Circling not authorized E of Rwy 3-21

MALSR MISSED APPROACH: Climb to 500 then climbing left turn to 2600 direct RENET and hold.

ATIS*	APP CON/DEP CON	TOWER*	GND CON	CLNC DEL	ASR/PAR
125.55 363.05	128.65 307.275	124.85 290.375	121.6 360.2	120.75 279.55	



EMERG SAFE ALT 100 NM 12,100

500	2600	RENET	† LNAV only
-----	------	-------	-------------

RW21 †1.1 NM to RW21  
 KOCKA 880 †  
 CIELO 2400  
 TROYE 2900  
 RENET 4000  
 GP 3.06° TCH 46

CATEGORY	A	B	C	D
LNAV/VNAV DA*	289-1/2	276	(300-1/2)	
LNAV MDA**	420-1/2 407 (500-1/2)	420-3/4 407 (500-3/4)		
CIRCLING***	440-1 427 (500-1)	480-1 467 (500-1)	480-1 1/2 467 (500-1 1/2)	580-2 567 (600-2)

ELEV 13 TDZE 13

212° to RW21  
 26, 125, 125, 5502 x 200, TWR 115, 122, 157, HIRL all Rwys

OXNARD, CALIFORNIA

34°07'N - 119°07'W POINT MUGU NAS (NAVAL BASE VENTURA CO) (KNTD)

Amdt 4 14SEP17

# RNAV (GPS) RWY 21

SW-3, 10 OCT 2019 to 07 NOV 2019

SW-3, 10 OCT 2019 to 07 NOV 2019