

OXNARD, CALIFORNIA

RNAV (GPS) RWY 3

APCH CRS	Rwy Idg	11,102
032°	TDZE	10
	Arprt Elev	13

AL-925 (USN)

POINT MUGU NAS (NAVAL BASE VENTURA CO) (KNTD)

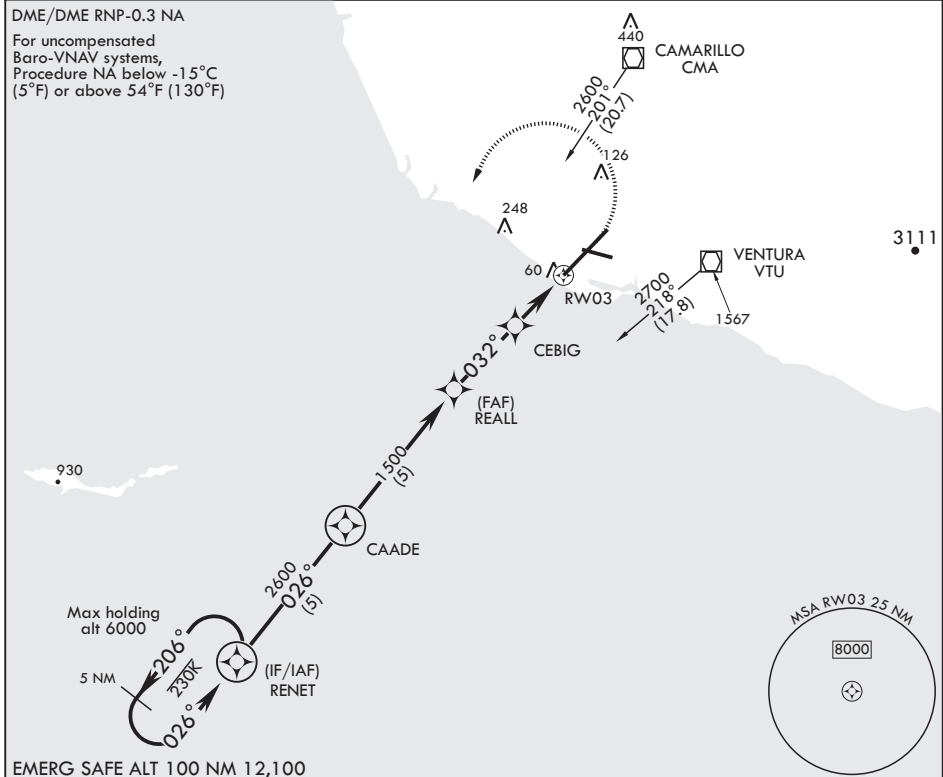
▼ * When ALS inop, increase CAT D vis to 7/8 mile.
 ** When ALS inop, increase CAT ABCD vis to 1 mile.
 *** Circling not authorized E of Rwy 3-21.

SALS MISSED APPROACH: Climb to 500 then climbing left turn to 2600 direct RENET and hold.
(A2)

ATIS★	APP CON/DEP CON	TOWER★	GND CON	CLNC DEL	ASR/PAR
125.55 363.05	128.65 307.275	124.85 290.375	121.6 360.2	120.75 279.55	

DME/DME RNP-0.3 NA

For uncompensated Baro-VNAV systems, Procedure NA below -15°C (5°F) or above 54°F (130°F)



EMERG SAFE ALT 100 NM 12,100

	500	2600	RENET	ELEV 13	TDZE 10
CATEGORY	A	B	C	D	
LNAV/VNAV DA*	261-3/4	251	(300-3/4)	266-3/4	256 (300-3/4)
LNAV MDA**	320-3/4		310	(400-3/4)	
CIRCLING***	440-1 427 (500-1)	480-1 467 (500-1)	480-1 1/2 467 (500-1 1/2)	580-2	567 (600-2)

OXNARD, CALIFORNIA

34°07'N - 119°07'W POINT MUGU NAS (NAVAL BASE VENTURA CO) (KNTD)

Amdt 4 14SEP17

RNAV (GPS) RWY 3

SW-3, 10 OCT 2019 to 07 NOV 2019

SW-3, 10 OCT 2019 to 07 NOV 2019