

OXNARD, CALIFORNIA

TACAN RWY 21

TACAN NTD Chan 43	APCH CRS 216°	Rwy Idg 11,102 TDZE 13 Arprt Elev 13
----------------------	------------------	--

AL-925 [USN]

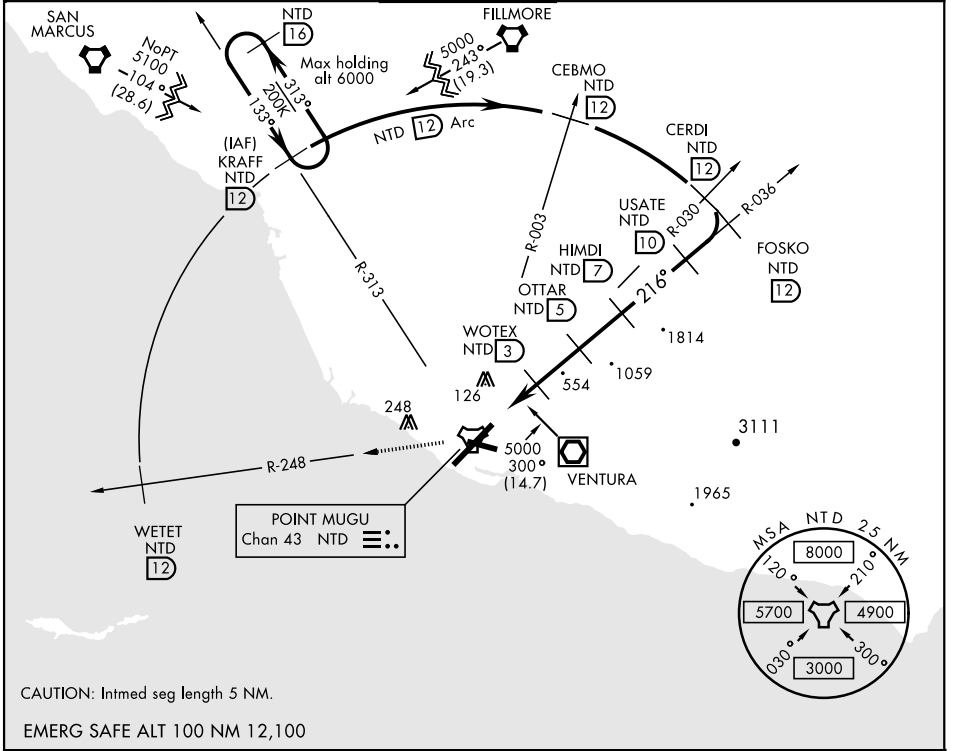
POINT MUGU NAS (NAVAL BASE VENTURA CO) (KNTD)

* When ALS inop, increase CAT AB vis to 1 mile, CAT CD vis to 1 1/8 miles.
 ** Circling not authorized E of Rwy 3-21



MISSED APPROACH: Climb to 5000 via NTD TACAN R-036 to NTD, then via NTD R-248 to WETET. Arc NW on NTD 12 DME arc to KRAFF and hold.

ATIS * 125.55 363.05	POINT MUGU APP CON 128.65 307.275	POINT MUGU TOWER * 124.85 290.375	GND CON 121.6 360.2	CLNC DEL 120.75 279.55	ASR/PAR
-------------------------	--------------------------------------	--------------------------------------	------------------------	---------------------------	---------



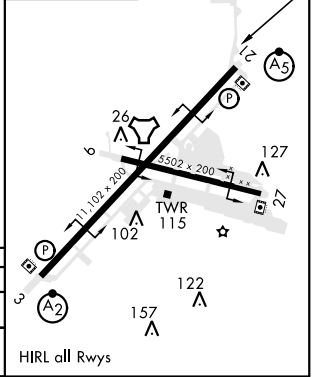
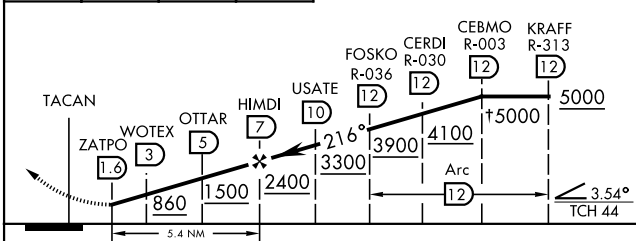
CAUTION: Intmed seg length 5 NM.

EMERG SAFE ALT 100 NM 12,100

5000 NTD R-036	NTD	WETET NTD 12	Arc NW to KRAFF
----------------	-----	--------------	-----------------

† Or as assigned.

ELEV 13	216° to TACAN
TDZE 13	



CATEGORY	A	B	C	D	E
S-21 *	420-5/8 407 (500-5/8)		420-3/4 407 (500-3/4)		NA
CIRCLING **	440-1 427 (500-1)	480-1 467 (500-1)	480-1 1/2 467 (500-1 1/2)	580-2 567 (600-2)	NA

HIRL all Rwy's

OXNARD, CALIFORNIA
Amdt 3 14SEP17

34°07'N-119°07'W

POINT MUGU NAS (NAVAL BASE VENTURA CO) (KNTD)

TACAN RWY 21

SW-3, 10 OCT 2019 to 07 NOV 2019

SW-3, 10 OCT 2019 to 07 NOV 2019