

OXNARD, CALIFORNIA

TACAN Y or VOR/DME RWY 3

VORTAC FIM 112.5 Chan 72	APCH CRS 025°	Rwy Idg 11,102 TDZE 10 Arprt Elev 13
--	-------------------------	---

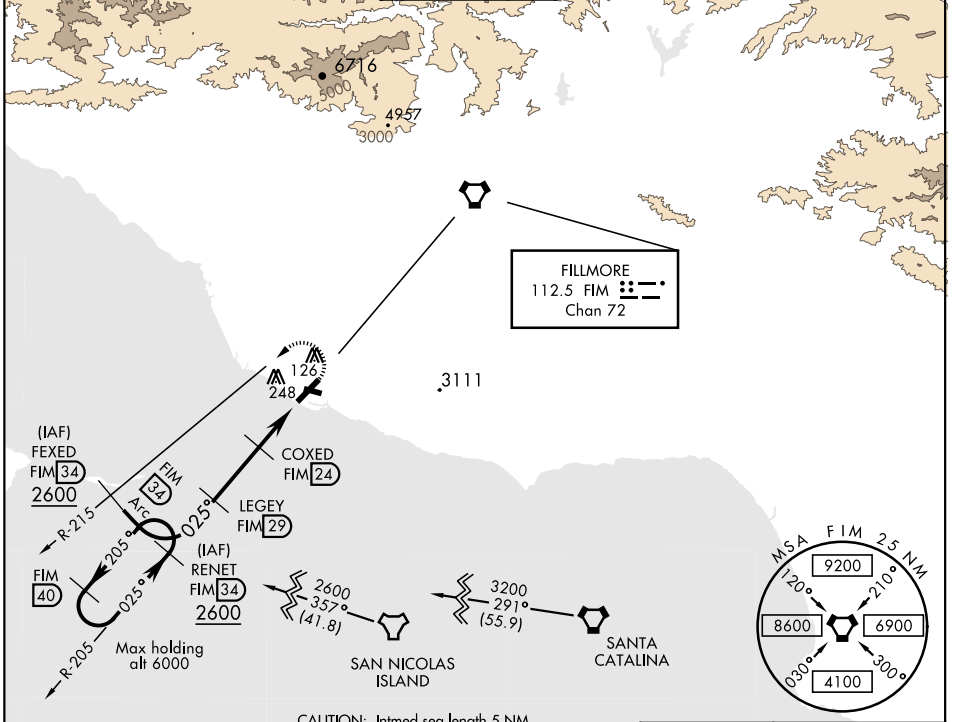
AL-925 [USN] POINT MUGU NAS (NAVAL BASE VENTURA CO) (KNTD)

▼ * When ALS inop, increase CAT AB vis to 1 mile, CAT CDE to 1/2 miles.
** Circling not authorized E of Rwy 3-21.

SALSF

MISSED APPROACH: Climbing left turn to 2600. Intercept the FIM VORTAC R-215, then via FIM R-215 to FEXED, Arc SW of FIM via the 34 DME arc to RENET and hold.

ATIS ★ 125.55 363.05	POINT MUGU APP CON 128.65 307.275	POINT MUGU TOWER ★ 124.85 290.375	GND CON 121.6 360.2	CLNC DEL 120.75 279.55	ASR/PAR
--------------------------------	---	---	-------------------------------	----------------------------------	---------

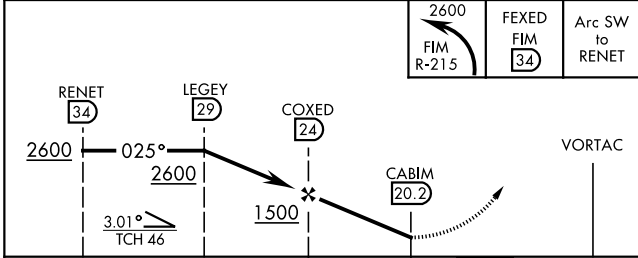


SW-3, 10 OCT 2019 to 07 NOV 2019

SW-3, 10 OCT 2019 to 07 NOV 2019

EMERG SAFE ALT 100 NM 12,100

ELEV	13
TDZE	10



Detailed diagram details: FIM 24 (248), FIM 34 (2600), Arc SW to RENET. Altitudes: 2600, 1500, 127, 122, 157, 102, 115. Distances: 11.102 x 200, 5502 x 200. HIRL all Rwy's. FAF to MAP 3.8 NM. Altitudes: 60, 90, 120, 150, 180. Times: 3:48, 2:32, 1:54, 1:31, 1:16.

CATEGORY	A	B	C	D	E
S-3 *	460-3/4 450 (500-3/4)		460-1 450 (500-1)		
CIRCLING **	460-1 447 (500-1)	480-1 467 (500-1)	480-1 1/2 467 (500-1 1/2)	580-2 567 (600-2)	NA

OXNARD, CALIFORNIA
Amdt 4 27APR17

34°07'N-119°07'W

POINT MUGU NAS (NAVAL BASE VENTURA CO) (KNTD)

TACAN Y or VOR/DME RWY 3