

# TACAN Z RWY 3

POINT MUGU NAS  
(NAVAL BASE VENTURA CO)(KNTD)

TACAN NTD Chan <b>43</b>	APCH CRS <b>026°</b>	Rwy ldg <b>11,102</b> TDZE <b>10</b> Arpt Elev <b>13</b>
-----------------------------	-------------------------	--

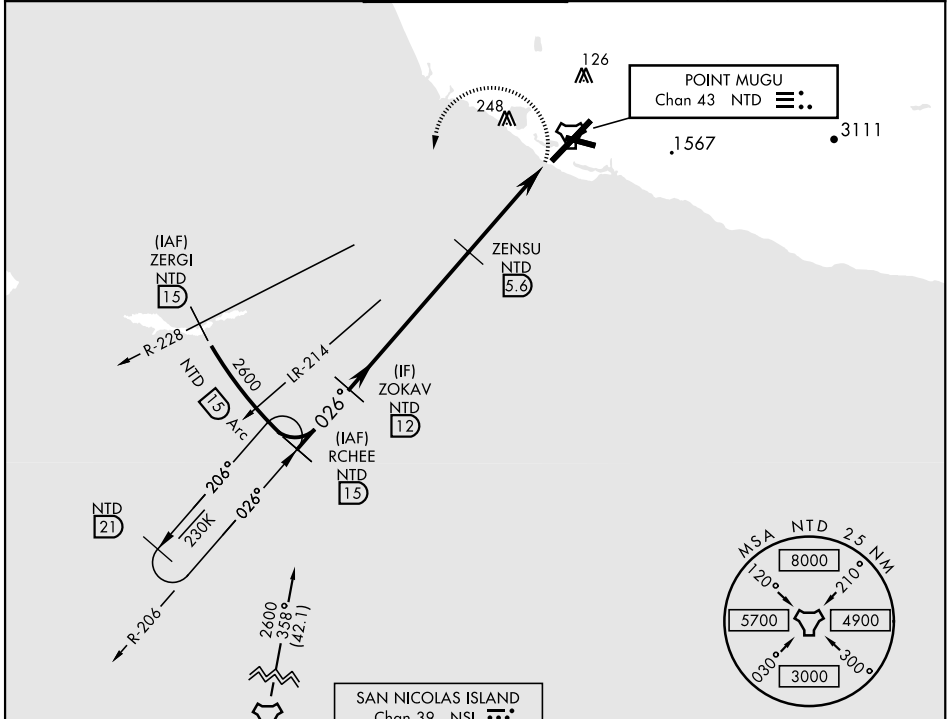
AL-925 [USN]

▼ \*When ALS inop, increase CAT AB vis to 1 mile, CAT CDE vis to 1½ miles.  
\*\*Circling not authorized E of Rwy 3-21.



MISSED APPROACH: Climbing left turn to 2600. Intercept the NTD TACAN R-228, then via NTD R-228 to ZERGI, Arc SW of NTD via the 15 DME arc to RCHEE and hold.

ATIS ★ <b>125.55 363.05</b>	POINT MUGU APP CON <b>128.65 307.275</b>	POINT MUGU TOWER ★ <b>124.85 290.375</b>	GND CON <b>121.6 360.2</b>	CLNC DEL <b>120.75 279.55</b>	ASR/PAR
--------------------------------	---	---	-------------------------------	----------------------------------	---------

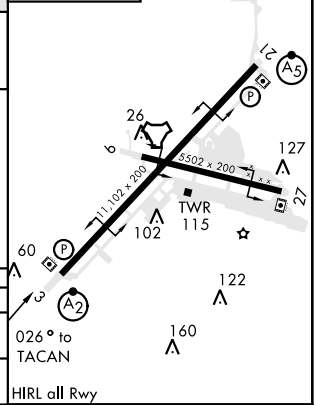
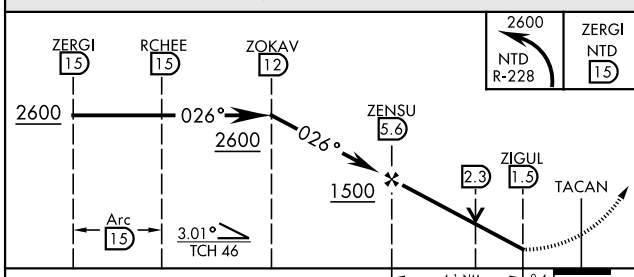


SW-3, 10 OCT 2019 to 07 NOV 2019

SW-3, 10 OCT 2019 to 07 NOV 2019

EMERG SAFE ALT 100 NM 12,100

ELEV 13
TDZE 10



CATEGORY	A	B	C	D	E
S-3 *	460-¾ 450 (500-¾)		460-1 450 (500-1)		
CIRCLING**	460-1 447 (500-1)	480-1 467 (500-1)	480-1½ 467 (500-1½)	580-2 567 (600-2)	NA