

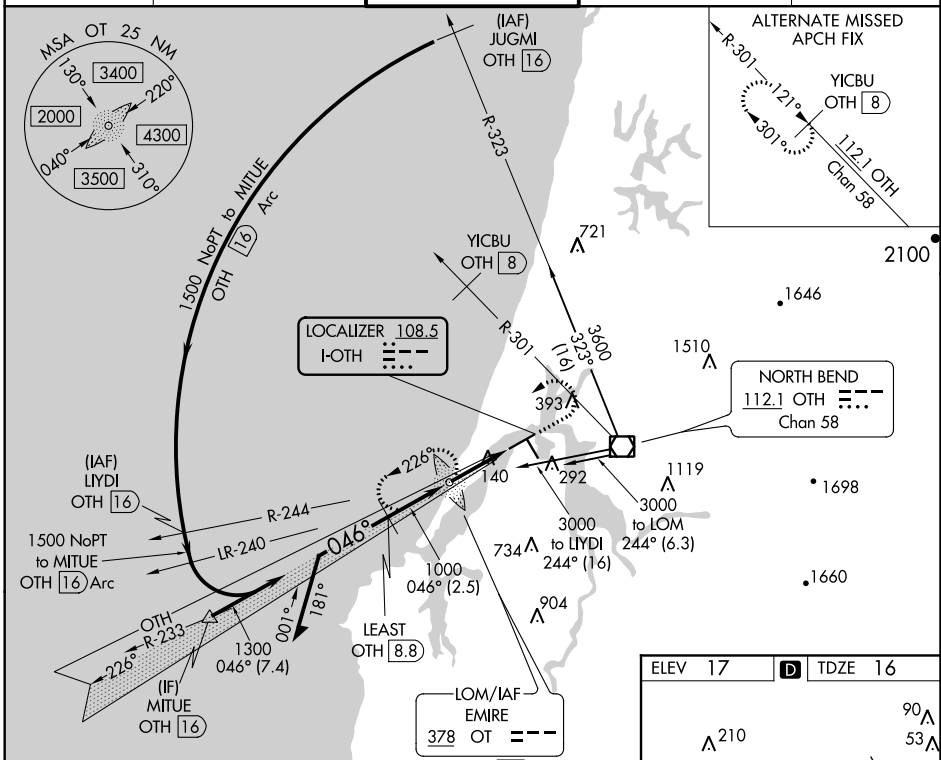
LOC I-OTH 108.5	APP CRS 046°	Rwy Idg 5320 TDZE 16 Apt Elev 17
---------------------------	------------------------	--

COPTER ILS or LOC RWY 4

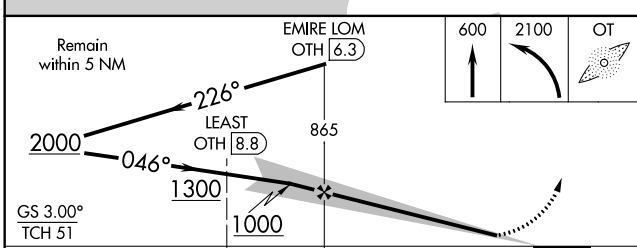
SOUTHWEST OREGON RGNL (OTH)

ADF and DME required. MISSED APPROACH: Climb to 600 then climbing left turn to 2100 direct EMIRE LOM and hold, continue climb-in-hold to 2100.

AWOS-3PT 135.075	SEATTLE CENTER 127.55 254.35	NORTH BEND TOWER* 118.45 (CTAF)	MC MINNVILLE RADIO 122.4 255.4	GND CON 127.1
----------------------------	--	---	--	-------------------------



ADF and DME REQUIRED



ELEV 17		TDZE 16
---------	--	---------

The diagram shows the runway layout for RWY 4-22, RWY 13-31, and RWY 31. It includes altitudes such as 210, 53, 137±, 82, 159±, 73±, 31, and 319±. Bearings of 046° 2.5 NM from FAF and 130° are also shown.

FAF to MAP 2.5 NM					
Knots	45	60	75	90	105
Min:Sec	3:20	2:30	2:00	1:40	1:26

CATEGORY	COPTER	
H-ILS 4	216-1/2	200 (200-1/2)
H-LOC 4	400-1/2	384 (400-1/2)