

(OTH6.OTH) 18200

NORTH BEND SIX DEPARTURE

AL-929 (FAA)

SOUTHWEST OREGON RGNL (OTH)
NORTH BEND, OREGON

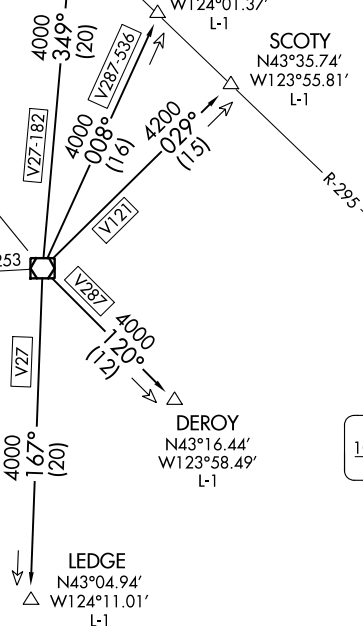
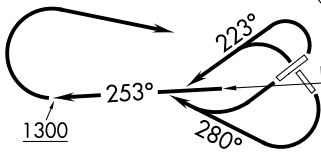
SEATTLE CENTER
121.4 239.0

GAMMA
N43°44.89'
W124°08.28'
L-1

RARES
N43°39.62'
W124°01.37'
L-1

SCOTY
N43°35.74'
W123°55.81'
L-1

NORTH BEND
112.1 OTH
Chan 58
N43°24.93'-W124°10.11'



ROSEBURG
108.2 RBG
Chan 19

NOTE: DME required.

TAKEOFF MINIMUMS

- Rwy 4: 900-3 with minimum climb of 300' per NM to 900 or Standard with minimum climb of 475' per NM to 1200.
- Rwy 13: 400-1 with minimum climb of 330' per NM to 1200.
- Rwy 22: Standard.
- Rwy 31: 300-1¼ or Standard with minimum climb of 280' per NM to 300.

NOTE: Chart not to scale.

DEPARTURE ROUTE DESCRIPTION

TAKEOFF RUNWAYS 4, 31: Climbing left turn heading 223° and on OTH R-253 thence

TAKEOFF RUNWAYS 13, 22: Climbing right turn heading 280° and on OTH R-253 thence

. . . . continue climb on OTH R-253 to 1300 then right turn direct OTH VOR/DME, then on assigned transition.

DEROY TRANSITION (OTH6.DEROY): From over OTH VOR/DME on OTH R-120 to DEROY INT.

GAMMA TRANSITION (OTH6.GAMMA): From over OTH VOR/DME on OTH R-349 to GAMMA INT.

LEDGE TRANSITION (OTH6.LEDGE): From over OTH VOR/DME on OTH R-167 to LEDGE INT.

RARES TRANSITION (OTH6.RARES): From over OTH VOR/DME on OTH R-008 to RARES INT.

SCOTY TRANSITION (OTH6.SCOTY): From over OTH VOR/DME on OTH R-029 to SCOTY INT.

NORTH BEND SIX DEPARTURE
(OTH6.OTH) 25JUN15

NORTH BEND, OREGON
SOUTHWEST OREGON RGNL (OTH)

NW-1, 10 OCT 2019 to 07 NOV 2019

NW-1, 10 OCT 2019 to 07 NOV 2019