


APP CRS 046°	Rwy Idg TDZE Apt Elev	5320 16 17
------------------------	-----------------------------	---------------------------------------

RNAV (RNP) Z RWY 4

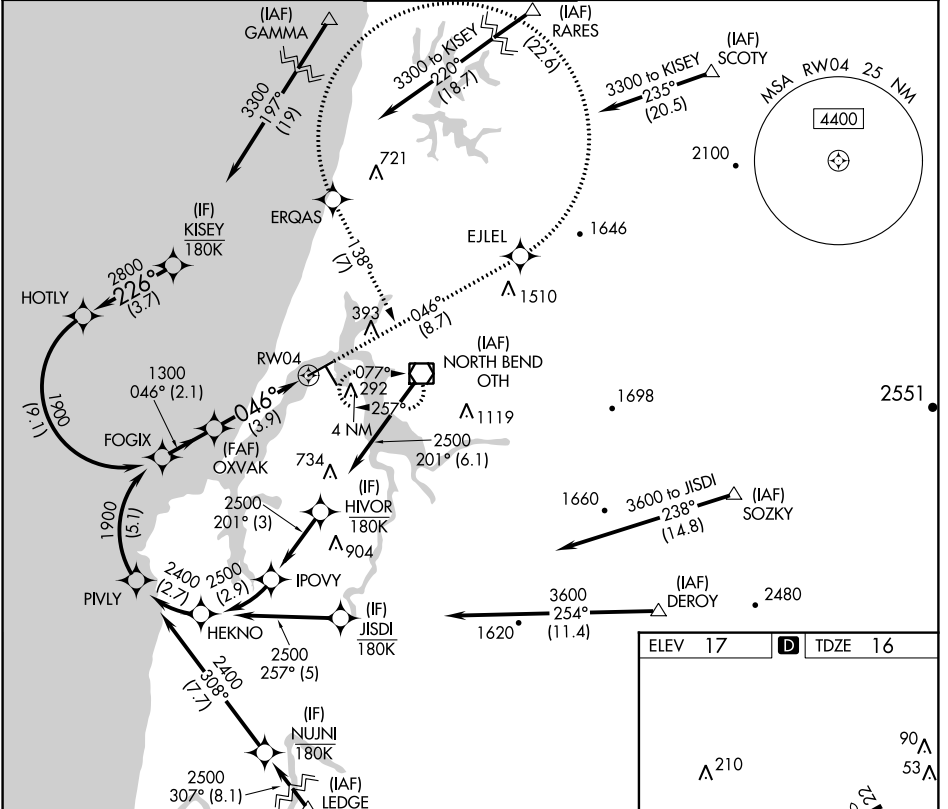
SOUTHWEST OREGON RGNL (OTH)

RF required. GPS required. For inop MALSR, increase RNP 0.30# all Cats visibility to 1½ mile. For uncompensated Baro-VNAV systems, procedure NA below -2°C (29°F) or above 54°C (130°F).
 * Missed approach requires a minimum climb of 400 feet per NM to 1200.
 # Missed approach requires a minimum climb of 255 feet per NM to 2400.

MALSR 

MISSED APPROACH: Climb to 3300 on track 046° to EJLEL, left turn to ERQAS, and on track 138° to OTH VOR/DME and hold.



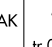

AWOS-3PT 135.075	SEATTLE CENTER 127.55 254.35	NORTH BEND TOWER* 118.45 (CTAF)	MC MINNVILLE RADIO 122.4 255.4	GND CON 127.1
----------------------------	--	--	--	-------------------------



NW-1, 10 OCT 2019 to 07 NOV 2019

NW-1, 10 OCT 2019 to 07 NOV 2019

See planview for multiple IF locations.

FOGIX	OXVAK	ERQAS	OTH
			
1900	1300	fr 138°	
GP 3.00°			
TCH 51			
	2.1 NM	3.9 NM	
CATEGORY	A	B	C
RNP 0.11 DA*		309-½	293 (300-½)
RNP 0.30 DA #		477-1½	461 (500-1½)
RNP 0.30 DA		569-1¾	553 (600-1¾)

AUTHORIZATION REQUIRED

