

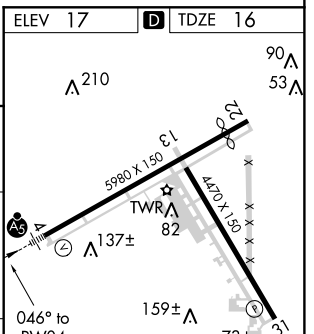
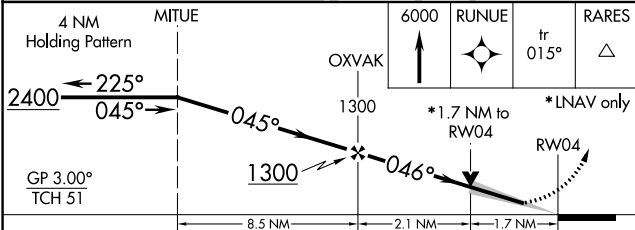
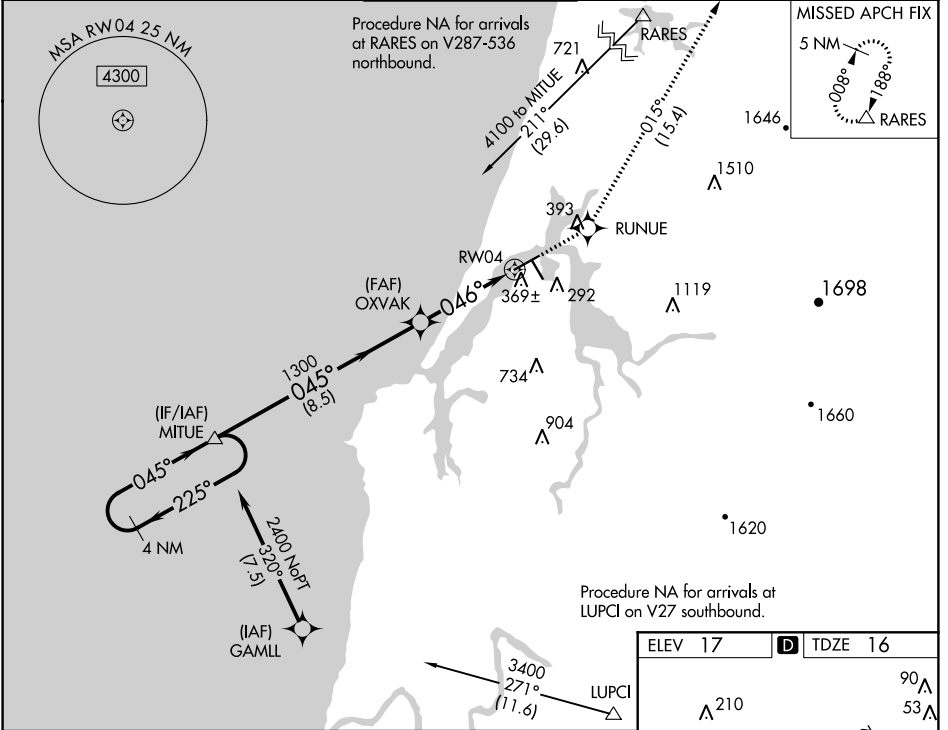
WAAS CH <b>82416</b> <b>W04A</b>	APP CRS <b>046°</b>	Rwy Idg TDZE Apt Elev	<b>5320</b> <b>16</b> <b>17</b>
--	------------------------	-----------------------------	---------------------------------------

# RNAV (GPS) Y RWY 4

SOUTHWEST OREGON RGNL (OTH)

<p><b>▼</b> For uncompensated Baro-VNAV systems, LNAV/VNAV NA below -2°C (29°F) or above 54°C (130°F). DME/DME RNP- 0.3 NA. For inop MALS/R, increase LPV all Cats visibility to 1 mile, LNAV/VNAV all Cats visibility to 1½ mile, and increase LNAV Cat C/D visibility to 1¼ mile. Night landing: Rwy 31 NA.</p>	<p><b>MALS/R</b> AS</p>	<p><b>MISSED APPROACH:</b> Climb to 6000 direct RUNUE and on track 015° to RARES and hold, continue climb-in-hold to 6000.</p>
---	-----------------------------	--

AWOS-3PT <b>135.075</b>	SEATTLE CENTER <b>127.55 254.35</b>	<b>NORTH BEND TOWER*</b> <b>118.45 (CTAF)</b> <b>0</b>	MC MINNVILLE RADIO <b>122.4 255.4</b>	GND CON <b>127.1</b>
----------------------------	--	---	--	-------------------------



CATEGORY	A	B	C	D
LPV DA		319-½	303 (400-½)	
LNAV/VNAV DA		550-1⅜	534 (600-1⅜)	
LNAV MDA	620-½	604 (700-½)	620-1⅜	604 (700-1⅜)
<b>C</b> CIRCLING	680-1 663 (700-1)	820-1 803 (900-1)	1100-3 1083 (1100-3)	1160-3 1143 (1200-3)

ELEV 17 **D** TDZE 16

HIRL Rwy 4-22 **0**  
MIRL Rwy 13-31 **0**  
REIL Rwys 13, 22 and 31 **0**

NW-1, 10 OCT 2019 to 07 NOV 2019

NW-1, 10 OCT 2019 to 07 NOV 2019