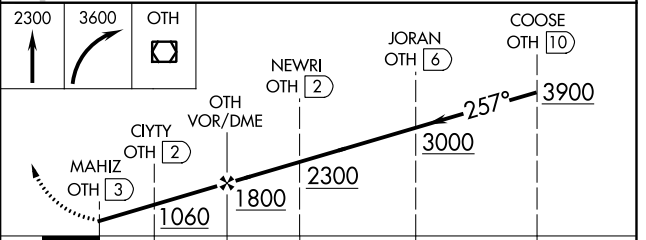
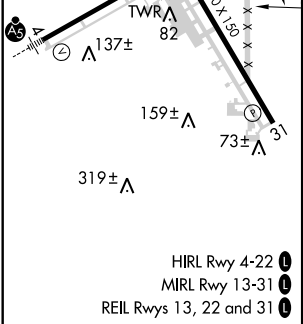
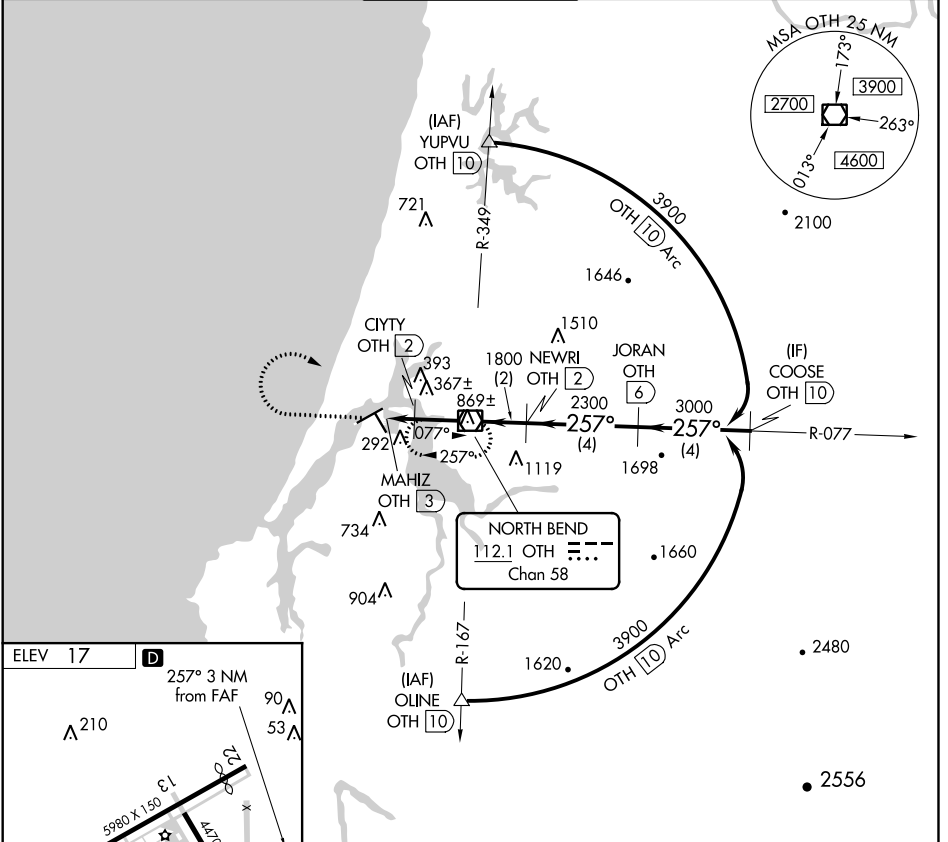


VOR/DME OTH 112.1 Chan 58	APP CRS 257°	Rwy Idg TDZE Apt Elev	N/A N/A 17
---	------------------------	-----------------------------	---------------------------------------

VOR/DME-B
SOUTHWEST OREGON RGNL (OTH)

▼ ▲ Night landing: Rwy 31 NA. Helicopter visibility reduction below 1 SM NA.	MISSED APPROACH: Climb to 2300 then climbing right turn to 3600 direct OTH VOR/DME and hold.
---	--

AWOS-3PT 135.075	SEATTLE CENTER 127.55 254.35	NORTH BEND TOWER* 118.45 (CTAF) 0	MC MINNVILLE RADIO 122.4 255.4	GND CON 127.1
----------------------------	--	--	--	-------------------------



CATEGORY	A	B	C	D
☐ CIRCLING	700-1 683 (700-1)	820-1 803 (900-1)	1100-3 1083 (1100-3)	1180-3 1163 (1200-3)

NW-1, 10 OCT 2019 to 07 NOV 2019

NW-1, 10 OCT 2019 to 07 NOV 2019