


LOC I-MMU 110.3	APP CRS 229°	Rwy Idg TDZE Apt Elev	5998 183 187
---------------------------	------------------------	-----------------------------	---

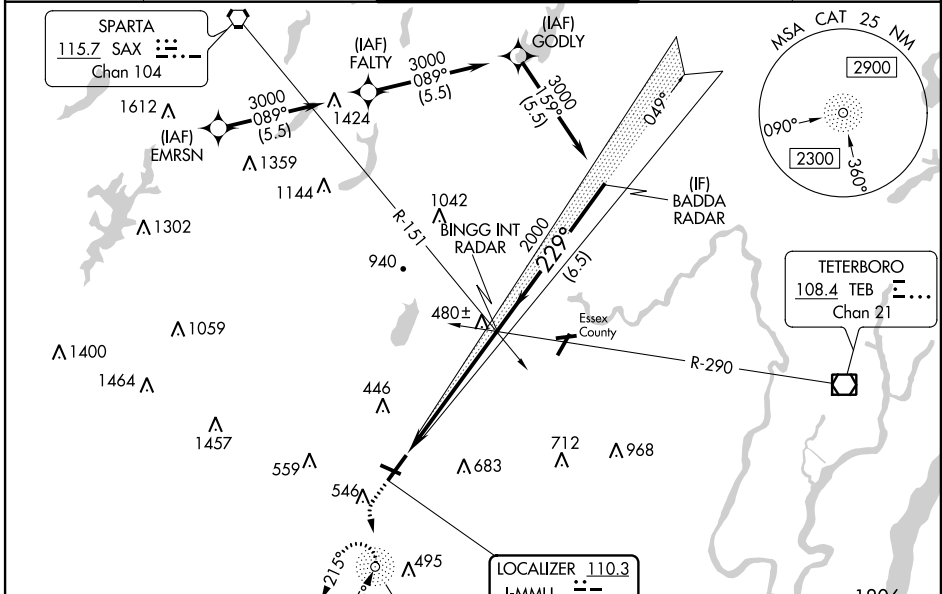
ILS or LOC RWY 23

MORRISTOWN MUNI (MMU)

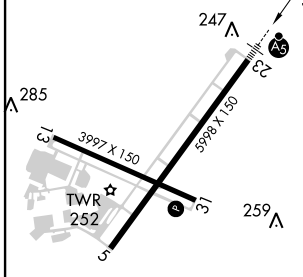
When local altimeter setting not received, use Newark Liberty Intl altimeter setting and increase all DA 54 feet and all MDA 60 feet; increase S-LOC 23 Cat C and D visibility 1/2 mile. Autopilot coupled approach NA below 732. ADF required. Rwy 23 helicopter visibility reduction below 1 SM NA. Rwy 13, 31 helicopter visibility reduction below 1 SM NA. Circling Rwy 13, 31 NA at night. For inop ALS, increase S-LOC 23 Cat A/B visibility to 1 SM. For inop ALS when using Newark Liberty Intl altimeter setting, increase S-ILS 23 all Cats visibility to 1 1/2 SM, and S-LOC 23 Cat A/B to 1 SM, and Cat C/D to 1 3/4 SM.

MALSR
 MISSED APPROACH: Climb to 700 then climbing left turn to 2000 direct CAT NDB and hold, continue climb-in-hold to 2000.

ATIS 124.25	NEW YORK APP CON 127.6 379.9	MORRISTOWN TOWER ★ 118.10 (CTAF) 353.9	GND CON 134.2	CLNC DEL 128.6
-----------------------	--	--	-------------------------	--------------------------



ELEV 187	TDZE 183
229° 5.5 NM from FAF	
266 A	247 A
285 A	259 A



GPS or RADAR REQUIRED

700 2000 CAT

BINGG INT RADAR 2000 BADA RADAR 3000

229° 2000 3000

GS 3.00° TCH 55

FAF to MAP 5.5 NM	Knots			
	60	90	120	150
Min:Sec	5:30	3:40	2:45	2:12
				1:50

CATEGORY	A	B	C	D
S-ILS 23		488-1	305 (400-1)	
S-LOC 23	740-1	557 (600-1)	740-1 1/2	557 (600-1 1/2)
CIRCLING	860-1 673 (700-1)	900-1 713 (800-1)	1000-2 1/2 813 (900-2 1/2)	1200-3 1013 (1100-3)

NE-2, 10 OCT 2019 to 07 NOV 2019

NE-2, 10 OCT 2019 to 07 NOV 2019