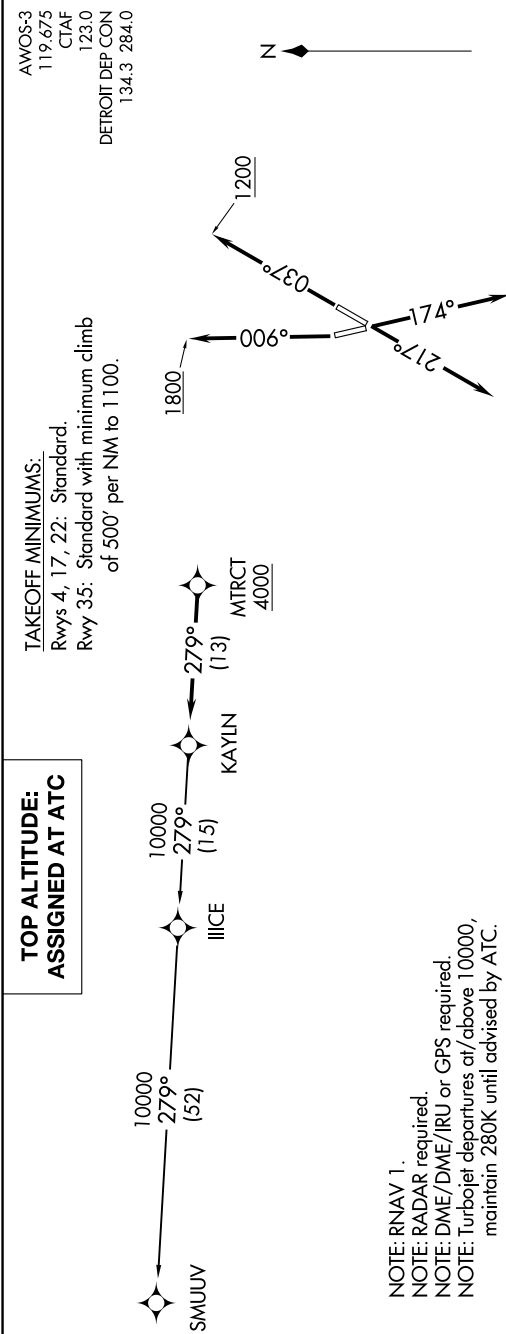


EC-1, 10 OCT 2019 to 07 NOV 2019



DEPARTURE ROUTE DESCRIPTION

TAKEOFF RUNWAY 4: Climb on heading 037° to 1200 then as assigned for RADAR vectors to cross MTRCT at or above 4000, thence....

TAKEOFF RUNWAY 17: Climb on heading 174° or as assigned for RADAR vectors to cross MTRCT at or above 4000, thence....

TAKEOFF RUNWAY 22: Climb on heading 217° or as assigned for RADAR vectors to cross MTRCT at or above 4000, thence....

TAKEOFF RUNWAY 35: Climb on heading 006° to 1800 then as assigned for RADAR vectors to cross MTRCT at or above 4000, thence....

...on track 279° to KAYLN, then on (transition). Maintain ATC assigned altitude, expect filed altitude 10 minutes after departure.

SMUUV TRANSITION (KAYLN2.SMUUV):

EC-1, 10 OCT 2019 to 07 NOV 2019