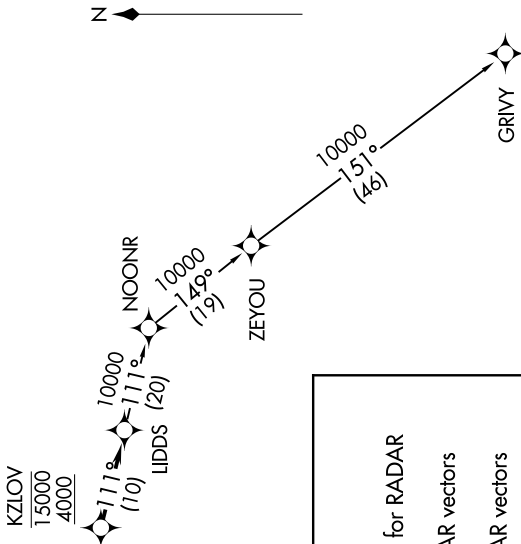


**TOP ALTITUDE:  
ASSIGNED BY ATC**

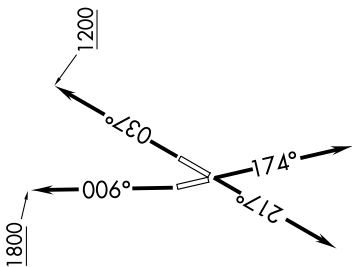
AWOS-3  
119.675  
CTAF  
123.0  
DETROIT DEP CON  
134.3 284.0

TAKEOFF MINIMUMS:

Rwys 4, 17, 22: Standard.  
Rwy 35: Standard with minimum climb  
of 500' per NM to 1100.



NOTE: RNAV 1.  
NOTE: RADAR required.  
NOTE: DME/DME/IRU or GPS required.  
NOTE: Turbopjet departures at/above 10000,  
maintain 280K until advised by ATC.



**DEPARTURE ROUTE DESCRIPTION**

**TAKEOFF RUNWAY 4:** Climb on heading 037° to 1200 then as assigned for RADAR vectors to cross KZLOV between 4000 and 15000, thence....  
**TAKEOFF RUNWAY 17:** Climb on heading 174° or as assigned for RADAR vectors to cross KZLOV between 4000 and 15000, thence....  
**TAKEOFF RUNWAY 22:** Climb on heading 217° or as assigned for RADAR vectors to cross KZLOV between 4000 and 15000, thence....  
**TAKEOFF RUNWAY 35:** Climb on heading 006° to 1800 then as assigned for RADAR vectors to cross KZLOV between 4000 and 15000, thence....

....on track 111° to LIDDS, then on (transition). Maintain ATC assigned altitude, expect filed altitude 10 minutes after departure.

GRIVY TRANSITION (LIDDS2.GRIVY):

NOTE: Chart not to scale.