

(ZETTR2.ZETTR) 19227

ZETTR TWO DEPARTURE (RNAV)

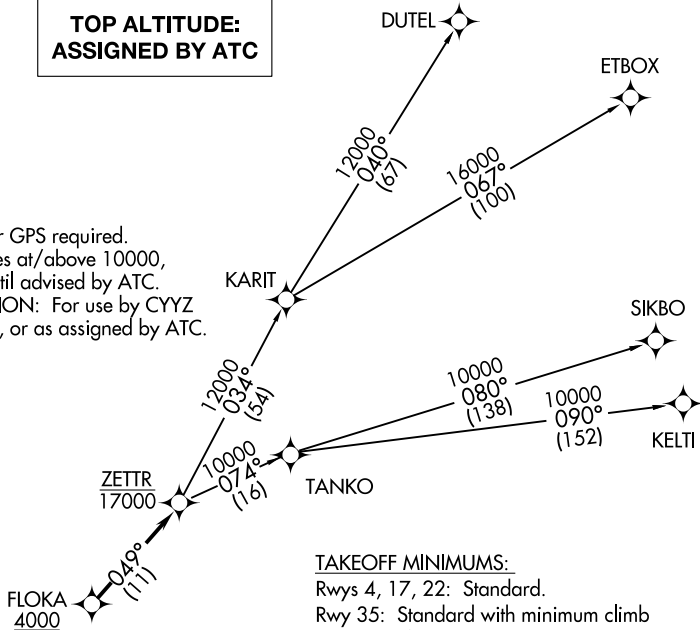
AL-940 (FAA)

GROSSE ILE MUNI (0N'Z)
DETROIT/GROSSE ILE, MICHIGAN

AWOS-3
119.675
CTAF
123.0
DETROIT DEP CON
134.3 284.0

**TOP ALTITUDE:
ASSIGNED BY ATC**

NOTE: RNAV 1.
NOTE: RADAR required.
NOTE: DME/DME/IRU or GPS required.
NOTE: Turbojet departures at/above 10000,
maintain 280K until advised by ATC.
NOTE: TANKO TRANSITION: For use by CYYZ
area arrivals only, or as assigned by ATC.



TAKEOFF MINIMUMS:

Rwys 4, 17, 22: Standard.
Rwy 35: Standard with minimum climb
of 500' per NM to 1100.

DEPARTURE ROUTE DESCRIPTION

TAKEOFF RUNWAY 4: Climb on heading 037° to 1200 then as assigned for RADAR vectors to cross FLOKA at or above 4000, thence....

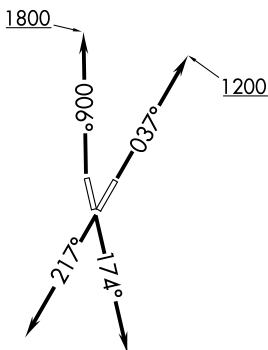
TAKEOFF RUNWAY 17: Climb on heading 174° or as assigned for RADAR vectors to cross FLOKA at or above 4000, thence....

TAKEOFF RUNWAY 22: Climb on heading 217° or as assigned for RADAR vectors to cross FLOKA at or above 4000, thence....

TAKEOFF RUNWAY 35: Climb on heading 006° to 1800 then as assigned for RADAR vectors to cross FLOKA at or above 4000, thence....

...on track 049° to cross ZETTR at or below 17000, then on (transition). Maintain ATC assigned altitude, expect filed altitude 10 minutes after departure.

- DUTEL TRANSITION (ZETTR2.DUTEL):
- ETBOX TRANSITION (ZETTR2.ETBOX):
- KELTI TRANSITION (ZETTR2.KELTI):
- SIKBO TRANSITION (ZETTR2.SIKBO):
- TANKO TRANSITION (ZETTR2.TANKO):



NOTE: Chart not to scale.

ZETTR TWO DEPARTURE (RNAV)
(ZETTR2.ZETTR) 15AUG19

DETROIT/GROSSE ILE, MICHIGAN
GROSSE ILE MUNI (0N'Z)

EC-1, 10 OCT 2019 to 07 NOV 2019

EC-1, 10 OCT 2019 to 07 NOV 2019