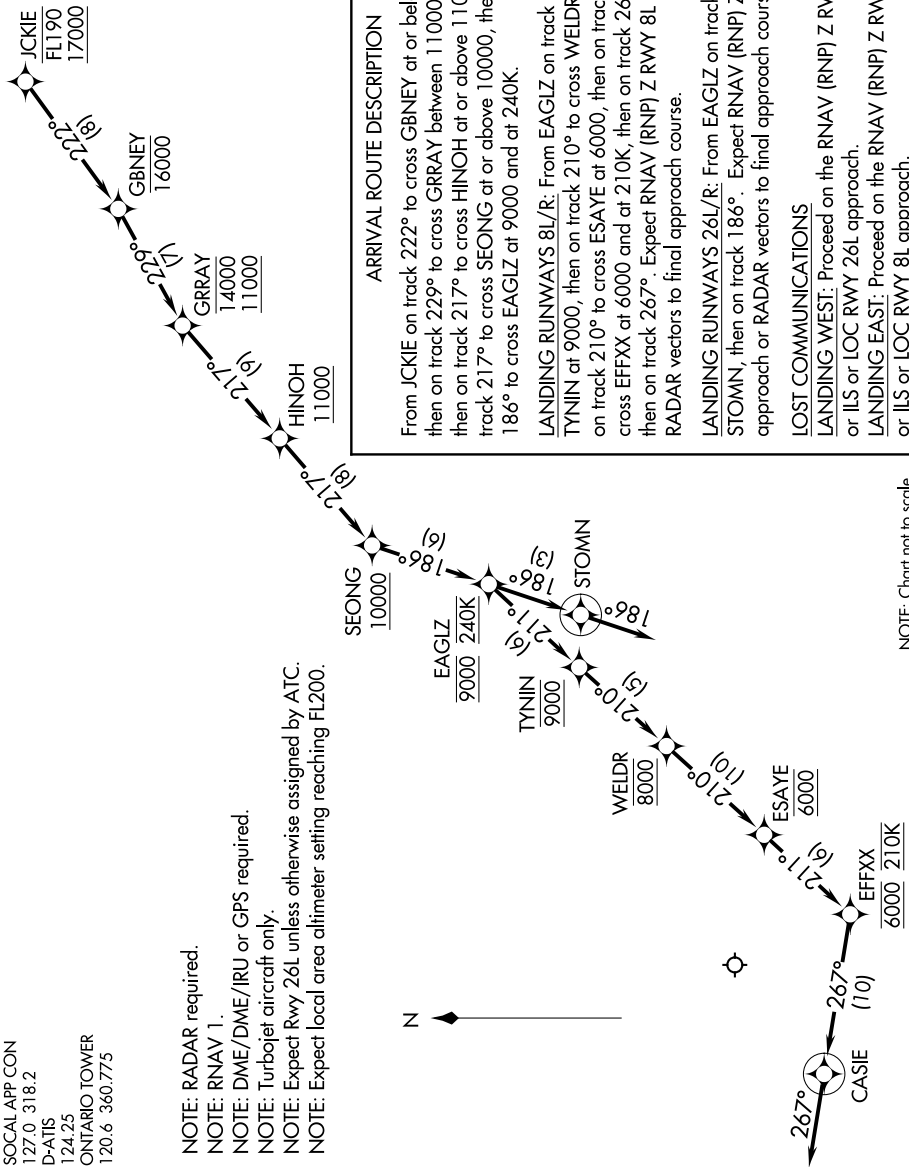


SW-3, 10 OCT 2019 to 07 NOV 2019

SOCAL APP CON
127.0 318.2
D-ATIS
124.25
ONTARIO TOWER
120.6 360.775

NOTE: RADAR required.
NOTE: RNAV 1.
NOTE: DME/DME/IRU or GPS required.
NOTE: Turbojet aircraft only.
NOTE: Expect Rwy 26L unless otherwise assigned by ATC.
NOTE: Expect local area altimeter setting reaching FL200.



ARRIVAL ROUTE DESCRIPTION

From JCKIE on track 222° to cross GBNEY at or below 16000, then on track 229° to cross GRRAY between 11000 and 14000, then on track 217° to cross HINOH at or above 11000, then on track 217° to cross SEONG at or above 10000, then on track 186° to cross EAGLZ at 9000 and at 240K.

LANDING RUNWAYS 8L/R: From EAGLZ on track 211° to cross TYNIN at 9000, then on track 210° to cross WELDR at 8000, then on track 210° to cross ESAYE at 6000, then on track 211° to cross EFFXX at 6000 and at 210K, then on track 267° to CASIE, then on track 267°. Expect RNAV (RNP) Z RWY 8L approach or RADAR vectors to final approach course.

LANDING RUNWAYS 26L/R: From EAGLZ on track 186° to STOMN, then on track 186°. Expect RNAV (RNP) Z RWY 26L approach or RADAR vectors to final approach course.

LOST COMMUNICATIONS

LANDING WEST: Proceed on the RNAV (RNP) Z RWY 26L approach or ILS or LOC RWY 26L approach.

LANDING EAST: Proceed on the RNAV (RNP) Z RWY 8L approach or ILS or LOC RWY 8L approach.

NOTE: Chart not to scale.

SW-3, 10 OCT 2019 to 07 NOV 2019