

LOC/DME I-ONT 109.7 Chan 34	APP CRS 258°	Rwy Idg TDZE Apt Elev	26R 12197 932 944	26L 10200 926 944
--	------------------------	-----------------------------	---	---

ILS or LOC RWY 26R

ONTARIO INTL (ONT)

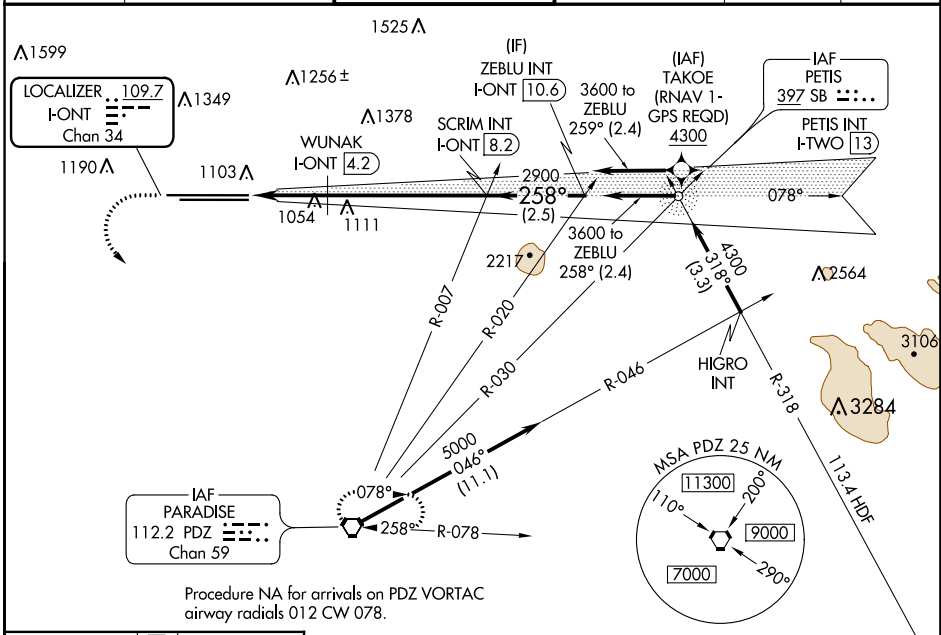
⚠ Circling NA north of Rwy 8L-26R. Inop table does not apply to Sidestep 26L Cat A. For inop ALS, increase Sidestep 26L Cat B visibility to 1 1/4 SM and Sidestep 26L Cat C to 2 1/2 SM. #RVR 1800 authorized with use of FD or AP or HUD to DA.

MALS Rwy 26R

ALS-2 Rwy 26L

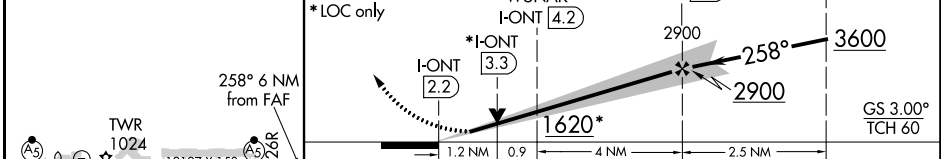
MISSED APPROACH: Climb to 2200 then climbing left turn to 4000 direct PDZ VORTAC and hold.

D-ATIS 124.25	SOCAL APP CON 127.0 318.2	ONTARIO TOWER 120.6 360.775	GND CON 121.9 257.8	CLNC DEL 118.1	CPDLC
-------------------------	-------------------------------------	---------------------------------------	-------------------------------	--------------------------	-------



Procedure NA for arrivals on PDZ VORTAC airway radials 012 CW 078.

ELEV 944	D	TDZE 26R 932 TDZE 26L 926	2200	4000	PDZ	VGSI and ILS glidepath not coincident (VGSI Angle 3.00/TCH 75).	ZEBLU INT I-ONT [10.6]
----------	----------	------------------------------	------	------	-----	---	------------------------



TWR 1024	TWR 1039	12197 X 150	10200 X 150	26R		
TDZ/CL Rwy 8L and 26L HIRL Rwy 8L-26R and 8R-26L						
FAF to MAP 6 NM						
Knots	60	90	120	150	180	
Min:Sec	6:00	4:00	3:00	2:24	2:00	
C CIRCLING	1620-1	676 (700-1)	1620-2	676 (700-2)	1620-2 1/4	676 (700-2 1/4)

SW-3, 10 OCT 2019 to 07 NOV 2019

SW-3, 10 OCT 2019 to 07 NOV 2019